

Come Alive-From "The Greatest Showman"

(♩ = 60)

Measures 1-6 of the piano introduction. The key signature is one sharp (F#) and the time signature is 4/4. The tempo is marked as ♩ = 60. The music features a series of chords in the right hand and a bass line in the left hand. The first four measures consist of a single chord (F#4) in the right hand and a single note (F#2) in the left hand. The fifth measure introduces a melody in the right hand and a bass line in the left hand. The sixth measure features a triplet of eighth notes in the right hand and a triplet of eighth notes in the left hand. The dynamic is marked *p* (piano).

(♩ = 117)

Measures 7-11 of the piano introduction. The tempo is marked as ♩ = 117. The music continues with a melody in the right hand and a bass line in the left hand. The dynamic is marked *ff* (fortissimo). The key signature remains one sharp (F#) and the time signature is 4/4.

Measures 12-15 of the piano introduction. The music continues with a melody in the right hand and a bass line in the left hand. The key signature remains one sharp (F#) and the time signature is 4/4.

Measures 16-18 of the piano introduction. The music continues with a melody in the right hand and a bass line in the left hand. The key signature remains one sharp (F#) and the time signature is 4/4.

Measures 19-22 of the piano introduction. The music continues with a melody in the right hand and a bass line in the left hand. The key signature remains one sharp (F#) and the time signature is 4/4.

23



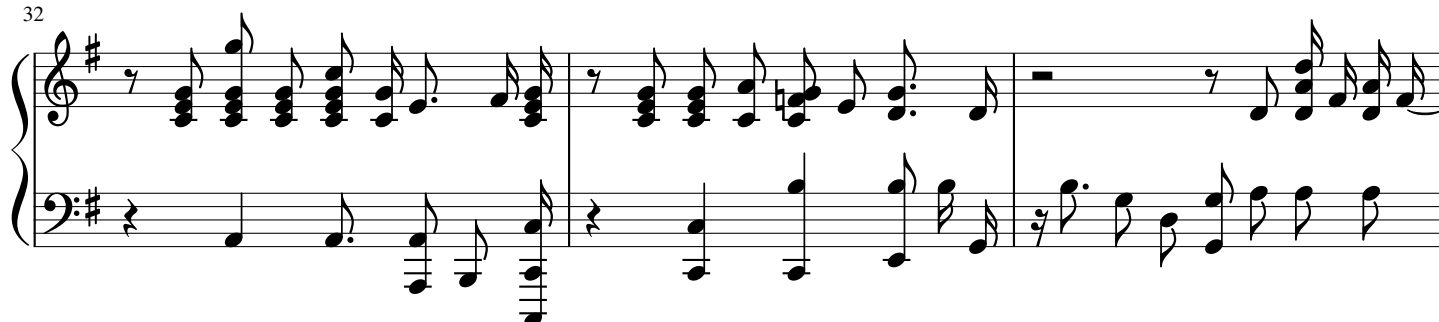
26



29



32



35



39



43



47



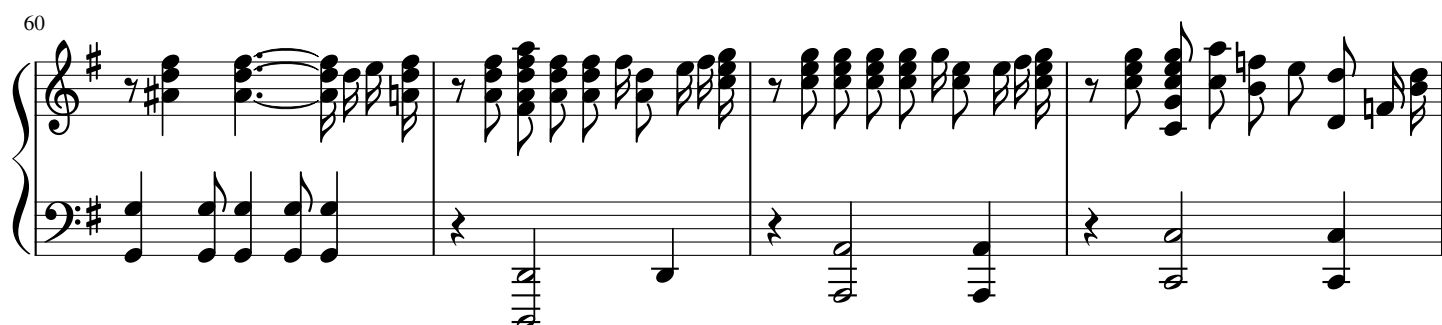
51



55



60



64



68

Measures 68-71 of a musical score in G major. The right hand features a melodic line with eighth and sixteenth notes, while the left hand provides a steady eighth-note accompaniment. Measure 71 concludes with a whole-note chord in the right hand.

72

Measures 72-75 of a musical score in G major. The right hand continues the melodic development with eighth notes, and the left hand maintains the eighth-note accompaniment. Measure 75 ends with a whole-note chord in the right hand.

76

Measures 76-79 of a musical score in G major. The right hand features a melodic line with eighth notes, and the left hand provides an eighth-note accompaniment. Measure 79 concludes with a whole-note chord in the right hand.

80

Measures 80-83 of a musical score in G major. The right hand features a melodic line with eighth notes, and the left hand provides an eighth-note accompaniment. Measure 83 concludes with a whole-note chord in the right hand.

84

Measures 84-87 of a musical score in G major. The right hand features a melodic line with eighth notes, and the left hand provides an eighth-note accompaniment. Measure 87 concludes with a whole-note chord in the right hand.

88

Measures 88-91 of a musical score in G major. The right hand features a melodic line with eighth notes, and the left hand provides an eighth-note accompaniment. Measure 91 concludes with a whole-note chord in the right hand.

91

Measures 91-94 of a musical score in G major. The treble staff features a complex, rapid arpeggiated figure in the right hand, while the bass staff provides a steady accompaniment with eighth and sixteenth notes. Measure 94 concludes with a whole note chord in the treble and a half note in the bass.

95

Measures 95-97 of the musical score. The treble staff continues with the arpeggiated figure, and the bass staff maintains its accompaniment. Measure 97 ends with a whole note chord in the treble and a half note in the bass.

98

Measures 98-101 of the musical score. Measure 98 features a whole note chord in the treble and a half note in the bass. Measures 99 and 100 continue the arpeggiated figure in the treble. Measure 101 concludes with a whole rest in the treble and a half note in the bass, followed by a final double bar line.