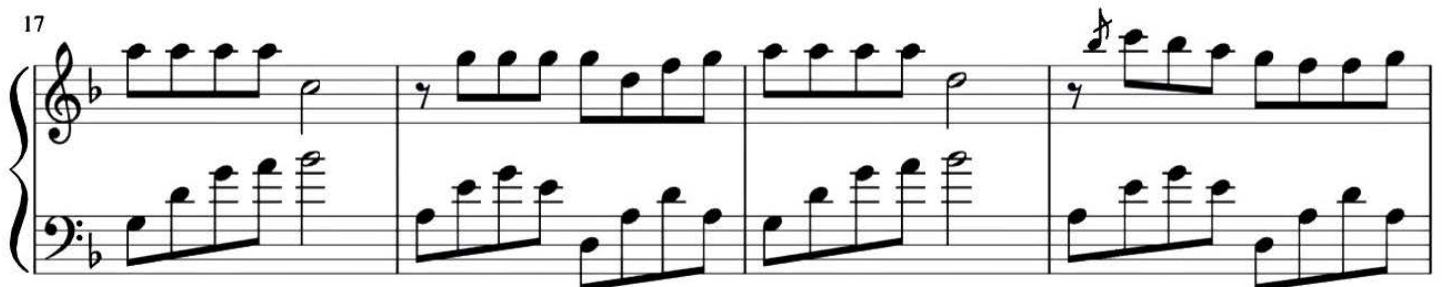
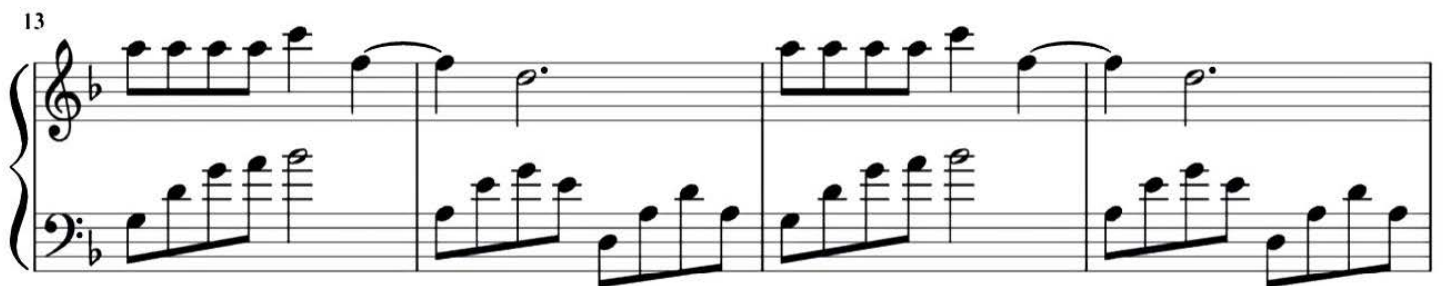


HOME

♩ = 160



21

Measures 21-24 of a musical score in B-flat major. The right hand features a melodic line with eighth and sixteenth notes, while the left hand provides a harmonic accompaniment with chords and moving lines. Measure 23 contains a whole rest in the right hand.

25

Measures 25-28 of a musical score in B-flat major. The right hand has a melodic line with some chords, and the left hand continues the accompaniment. Measure 27 contains a whole rest in the right hand.

29

Measures 29-32 of a musical score in B-flat major. The right hand features a melodic line with eighth notes, and the left hand provides a harmonic accompaniment. Measure 31 contains a whole rest in the right hand.

33

Measures 33-36 of a musical score in B-flat major. The right hand has a melodic line with eighth notes, and the left hand provides a harmonic accompaniment. Measure 35 contains a whole rest in the right hand.

37

8

Measures 37-40 of a musical score in B-flat major. The right hand features a melodic line with eighth notes, and the left hand provides a harmonic accompaniment. Measure 39 contains a whole rest in the right hand. A repeat sign with a first ending bracket labeled '8' is shown above measure 40.

41 8

41 42 43 44

45 8

45 46 47 48

49 8

49 50 51 52

53 8

53 54 55 56

57

57 58 59 60

63

Measures 63-67 of a musical score in B-flat major. Measure 63 features a triplet of eighth notes in the right hand and a whole note chord in the left. Measures 64-65 continue the triplet pattern. Measure 66 has a half note in the right hand and a whole note chord in the left. Measure 67 has a whole note in the right hand and a whole note chord in the left.

68

Measures 68-71 of a musical score in B-flat major. Measures 68-69 feature a half note in the right hand and a whole note chord in the left. Measures 70-71 feature a half note in the right hand and a whole note chord in the left.

72

Measures 72-75 of a musical score in B-flat major. Measures 72-73 feature a half note in the right hand and a whole note chord in the left. Measures 74-75 feature a half note in the right hand and a whole note chord in the left.

76

Measures 76-79 of a musical score in B-flat major. Measures 76-77 feature a half note in the right hand and a whole note chord in the left. Measures 78-79 feature a half note in the right hand and a whole note chord in the left.

80

Measures 80-83 of a musical score in B-flat major. Measures 80-81 feature a half note in the right hand and a whole note chord in the left. Measures 82-83 feature a half note in the right hand and a whole note chord in the left.

84

Measures 84-87. The piece is in B-flat major (two flats). The right hand features a melody of eighth and quarter notes, while the left hand plays a steady eighth-note accompaniment. Measure 87 concludes with a whole-note chord in the right hand.

88

Measures 88-91. Measures 88 and 89 are marked with an 8-measure repeat sign. The right hand has a melodic line with some triplets, and the left hand continues with eighth-note accompaniment. Measure 91 ends with a whole-note chord in the right hand.

92

Measures 92-95. Measures 92 and 93 are marked with an 8-measure repeat sign. The right hand features a melodic line with triplets, and the left hand plays eighth-note accompaniment. Measure 95 ends with a whole-note chord in the right hand.

96

Measures 96-99. The right hand plays a series of chords and dyads, while the left hand continues with eighth-note accompaniment. Measure 99 ends with a whole-note chord in the right hand.

100

Measures 100-103. The right hand plays a series of chords and dyads, while the left hand continues with eighth-note accompaniment. Measure 103 ends with a whole-note chord in the right hand.

104

8

108

8

113

8

117

8

121

8

125 8



129



135

