

# Shape of you

Performed by Ed Sheeran

Transcribed by Nohpets

$\text{♩} = 190$

C#

F#

A

B

Measures 1-6 of the piano introduction. The key signature is C# major (three sharps). The time signature is 4/4. The tempo is 190 bpm. The notation shows a steady eighth-note bass line in the left hand and a melody of dotted quarter notes in the right hand.

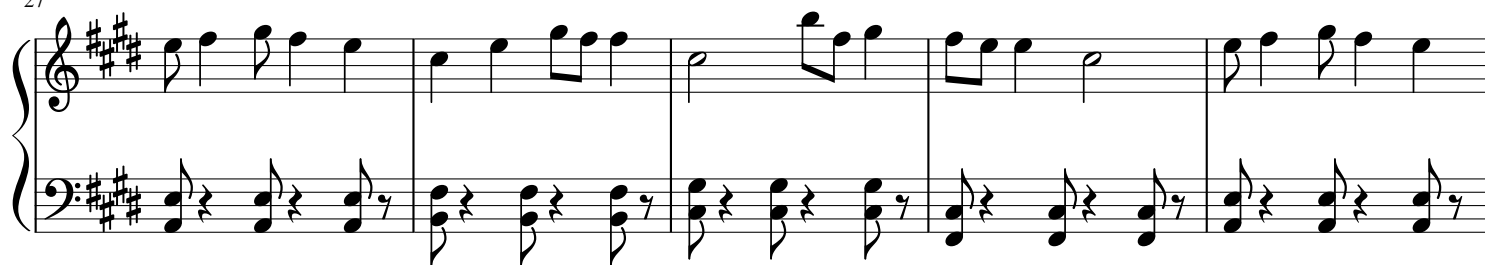
Measures 7-11. The melody continues with eighth-note runs in the right hand. The bass line remains consistent with eighth notes.

Measures 12-16. The melody features a half-note rest in measure 12, followed by eighth-note patterns. The bass line continues with eighth notes.

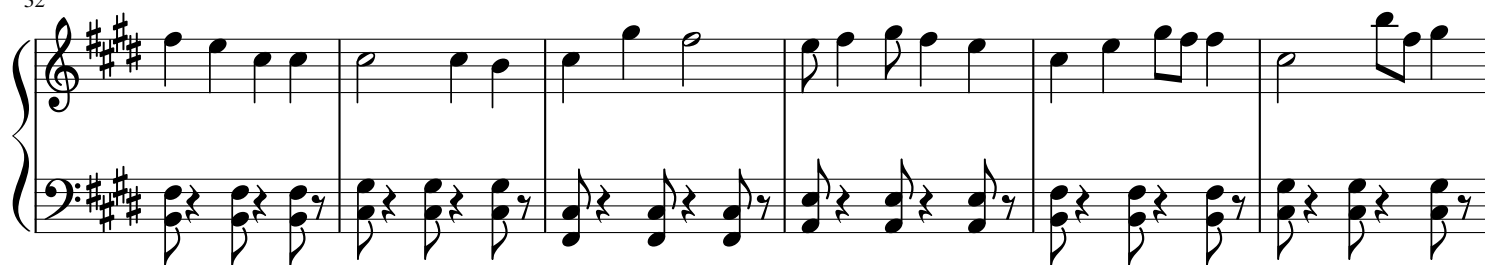
Measures 17-21. The melody consists of continuous eighth-note runs. The bass line continues with eighth notes.

Measures 22-26. The melody continues with eighth-note runs. The bass line continues with eighth notes. A double bar line appears after measure 24.

27



32



38



43



48



54



59



65

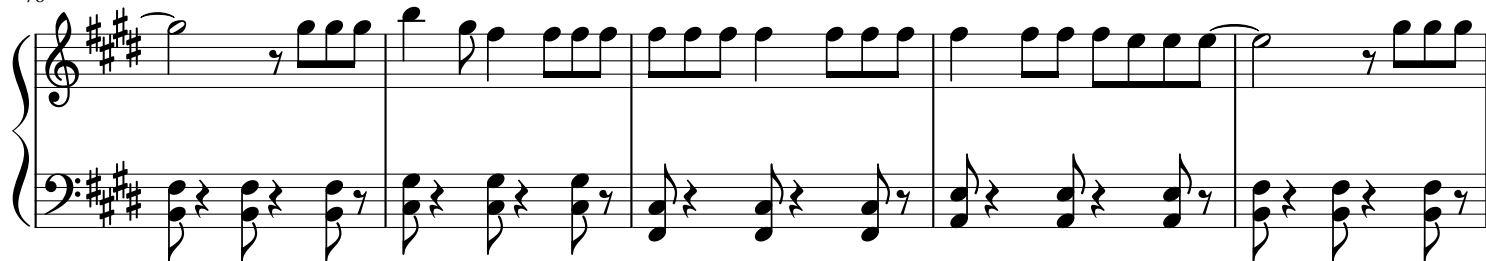


71

To Coda



76



81

Measures 81-85: Treble clef staff contains a continuous eighth-note melody. Bass clef staff contains chords and single notes.

86

Measures 86-91: Treble clef staff contains a continuous eighth-note melody. Bass clef staff contains chords and single notes. Measure 91 features a repeat sign in the treble staff, followed by a new melodic phrase. Bass staff has rests in measures 91-93.

92

Measures 92-98: Treble clef staff contains a continuous eighth-note melody. Bass clef staff contains rests for measures 92-97 and then enters with a new rhythmic pattern in measure 98.

99

Measures 99-104: Treble clef staff contains a continuous eighth-note melody. Bass clef staff contains chords and single notes.

105

D.S. al Coda  $\Phi$

Measures 105-108: Treble clef staff contains a continuous eighth-note melody. Bass clef staff contains chords and single notes. Measure 105 features a fermata over the final note of the treble staff. Measures 106-108 show the continuation of the melodic line in the treble staff and a final bass line in the bass staff.