

On my way

Alan walker

♩ = 86

Measures 1-5 of the piece. The key signature is three sharps (F#, C#, G#). The tempo is marked as quarter note = 86. The time signature changes from 15/8 to 4/4 at measure 2. The melody in the right hand features eighth and sixteenth notes, while the bass line in the left hand consists of a steady eighth-note pattern.

6

Measures 6-8. The melody continues with eighth and sixteenth notes. Measure 7 features a triplet of eighth notes in the right hand. The bass line remains a steady eighth-note pattern.

9

Measures 9-12. Measures 10-12 feature a triplet of eighth notes in the right hand. The bass line changes from an eighth-note pattern to a series of chords in measures 10-12.

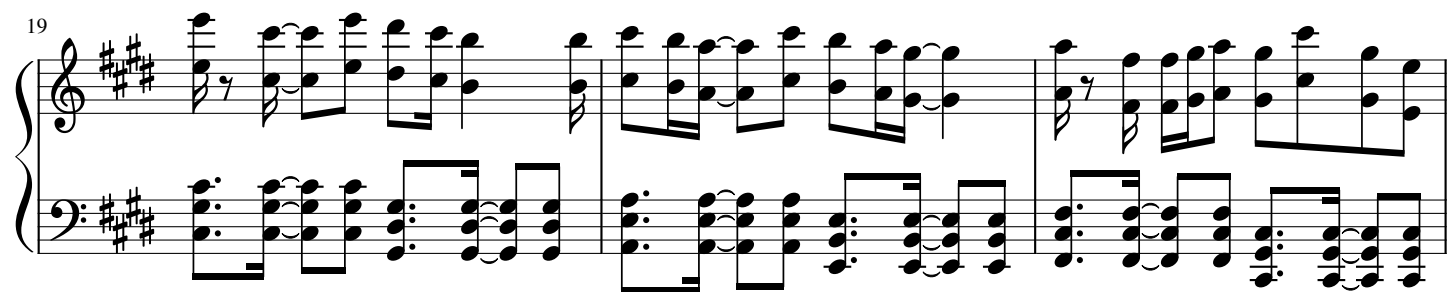
13

Measures 13-15. Measures 13-14 feature a triplet of eighth notes in the right hand. The bass line consists of chords. Measure 15 has a more complex right-hand melody with eighth and sixteenth notes.

16

Measures 16-19. The piece concludes with a final melody in the right hand and a bass line of chords. The key signature remains three sharps.

19



System 19: Treble and bass staves in A major (three sharps). The treble staff features a melodic line with eighth and sixteenth notes, including slurs and ties. The bass staff provides a harmonic accompaniment with chords and moving lines.

22



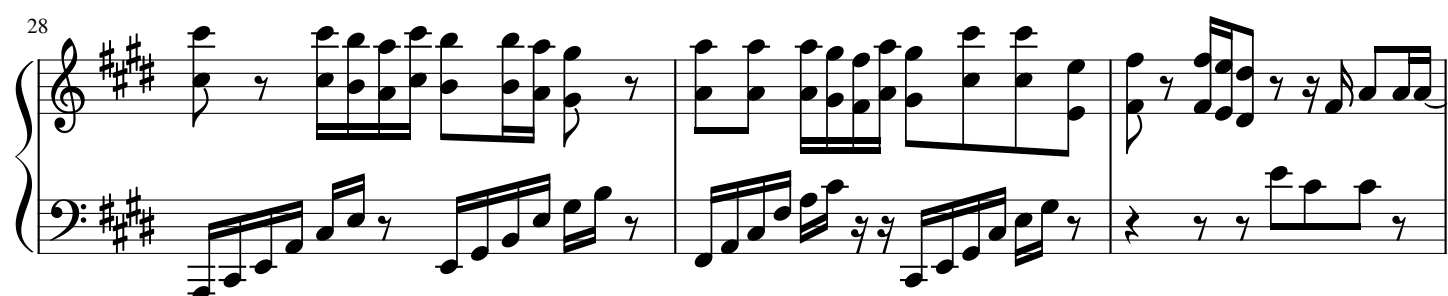
System 22: Continuation of the piece. The treble staff has more complex rhythmic patterns with slurs. The bass staff continues with a steady accompaniment.

25



System 25: The treble staff shows a change in texture with more frequent sixteenth-note passages. The bass staff maintains a consistent rhythmic foundation.

28




System 28: Further development of the melodic and harmonic themes. The treble staff includes slurs and ties, while the bass staff features a mix of eighth and sixteenth notes.

31



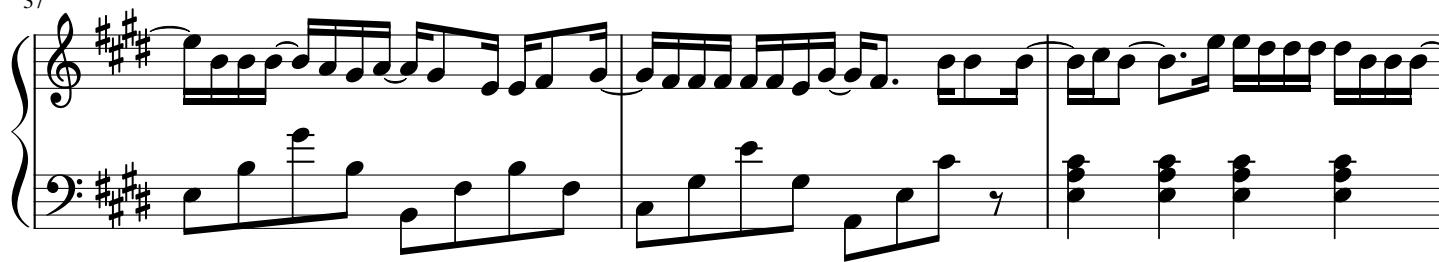
System 31: The treble staff has a more active melodic line. The bass staff continues with a steady accompaniment, featuring some rests.

34



System 34: The final system on the page. The treble staff has a complex melodic line with many slurs and ties. The bass staff provides a steady accompaniment with eighth notes.

37



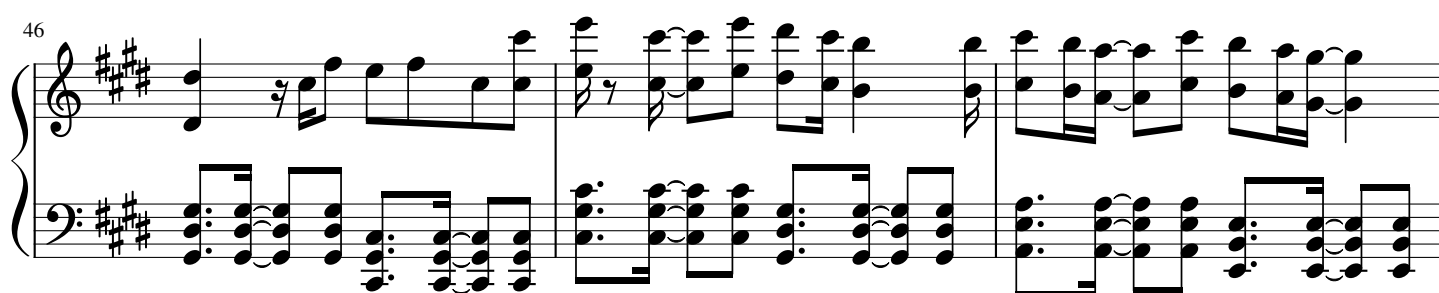
40



43



46



49



52



55

Measures 55-58 of a musical score in A major (three sharps). The right hand features a melodic line with eighth and sixteenth notes, including grace notes. The left hand provides a harmonic accompaniment with chords and single notes.

59

Measures 59-61 of the musical score. The right hand continues the melodic pattern with grace notes. The left hand accompaniment consists of chords and single notes.

62

Measures 62-64 of the musical score. The right hand has a more active melodic line with slurs. The left hand accompaniment features chords and eighth notes.

65

Measures 65-67 of the musical score. The right hand continues with a melodic line. The left hand accompaniment consists of chords and eighth notes.

68

Measures 68-70 of the musical score. The right hand has a melodic line. The left hand accompaniment consists of chords and eighth notes, ending with a double bar line.