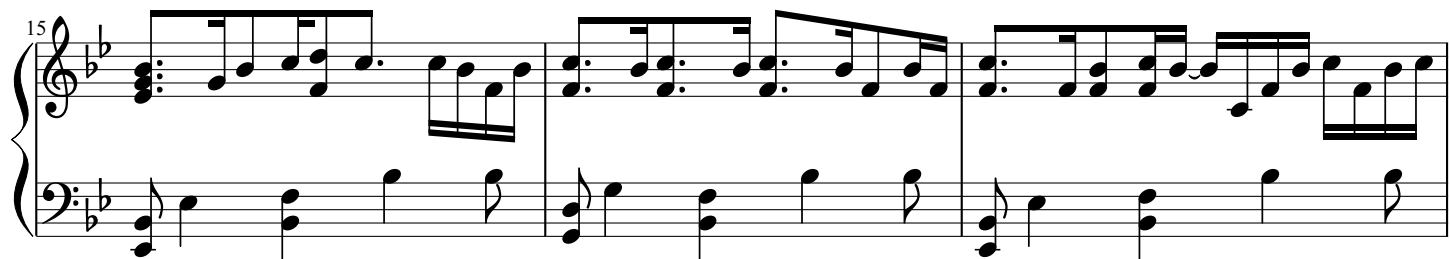
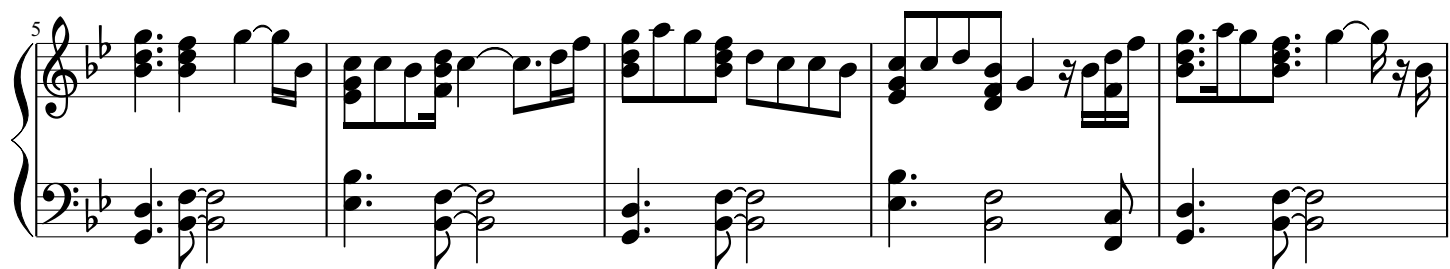
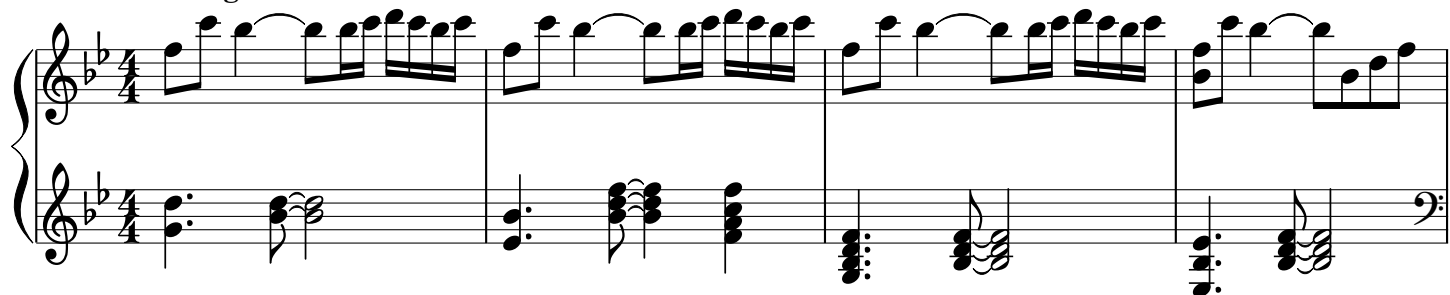


See You Again

Wiz Khalifa ft. Charlie Puth

Adagio



20

System 1, measures 20-22. The key signature has two flats (B-flat and E-flat). The treble clef staff contains a series of eighth-note chords and single notes, while the bass clef staff provides a harmonic accompaniment with chords and single notes.

23

System 2, measures 23-25. The treble clef staff features a continuous eighth-note melody, and the bass clef staff continues the accompaniment with chords and single notes.

26

System 3, measures 26-30. Measures 26-29 show a complex texture with many beamed notes in the treble staff and sustained chords in the bass. Measure 30 is a final chordal measure.

31

System 4, measures 31-35. Measures 31-34 are characterized by dense, beamed sixteenth-note passages in the treble staff. Measure 35 consists of two sustained chords in the treble and a moving line in the bass.

36

System 5, measures 36-39. Measures 36-38 feature a mix of chords and moving lines in both staves. Measure 39 concludes the system with a final chord in the treble and a sustained note in the bass.

39

Measures 39-41. Treble clef: Measure 39 has eighth-note chords (F4, A4) and (Bb4, D5). Measure 40 has a sixteenth-note run (F4, G4, A4, Bb4) followed by eighth-note chords (C5, Bb4) and (A4, G4). Measure 41 has eighth-note chords (F4, A4) and (Bb4, D5). Bass clef: Steady eighth-note accompaniment with chords (F2, A2) and (Bb2, D3).

42

Measures 42-43. Treble clef: Measure 42 has eighth-note chords (F4, A4) and (Bb4, D5). Measure 43 has a sixteenth-note run (F4, G4, A4, Bb4) followed by eighth-note chords (C5, Bb4) and (A4, G4). Bass clef: Steady eighth-note accompaniment with chords (F2, A2) and (Bb2, D3).

44

Measures 44-46. Treble clef: Measure 44 has eighth-note chords (F4, A4) and (Bb4, D5). Measure 45 has a sixteenth-note run (F4, G4, A4, Bb4) followed by eighth-note chords (C5, Bb4) and (A4, G4). Measure 46 has eighth-note chords (F4, A4) and (Bb4, D5). Bass clef: Steady eighth-note accompaniment with chords (F2, A2) and (Bb2, D3).

47

Measures 47-49. Treble clef: Measure 47 has eighth-note chords (F4, A4) and (Bb4, D5). Measure 48 has a sixteenth-note run (F4, G4, A4, Bb4) followed by eighth-note chords (C5, Bb4) and (A4, G4). Measure 49 has eighth-note chords (F4, A4) and (Bb4, D5). Bass clef: Steady eighth-note accompaniment with chords (F2, A2) and (Bb2, D3).

50

Measures 50-52. Treble clef: Measure 50 has eighth-note chords (F4, A4) and (Bb4, D5). Measure 51 has a sixteenth-note run (F4, G4, A4, Bb4) followed by eighth-note chords (C5, Bb4) and (A4, G4). Measure 52 has eighth-note chords (F4, A4) and (Bb4, D5). Bass clef: Steady eighth-note accompaniment with chords (F2, A2) and (Bb2, D3).

54

System 1, measures 54-57. The music is in B-flat major (two flats) and 4/4 time. The right hand features a melodic line with eighth and sixteenth notes, while the left hand provides a harmonic accompaniment with chords and moving lines. Measure 57 ends with a repeat sign.

58

8va —————

System 2, measures 58-62. Measure 58 begins with an 8va (octave up) marking above the staff. The right hand continues the melodic development, and the left hand features a more active bass line with eighth notes. Measure 62 ends with a repeat sign.

63

System 3, measures 63-67. The right hand has a more complex texture with many beamed sixteenth notes. The left hand continues with a steady accompaniment. Measure 67 ends with a repeat sign.

68

System 4, measures 68-70. This system contains three measures. The right hand features a series of chords and moving lines, while the left hand has a rhythmic accompaniment. Measure 70 ends with a repeat sign.

71

System 5, measures 71-73. The final system on the page, containing three measures. The right hand has a melodic line with some rests, and the left hand provides a consistent accompaniment. Measure 73 ends with a repeat sign.

