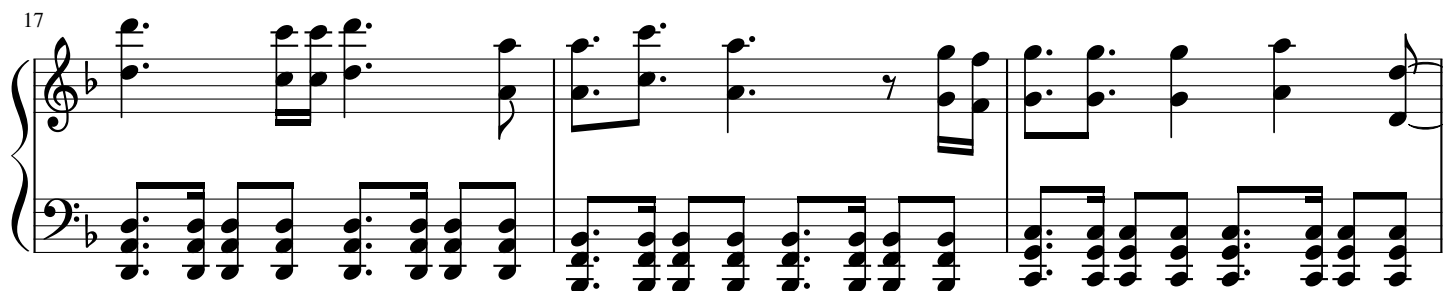
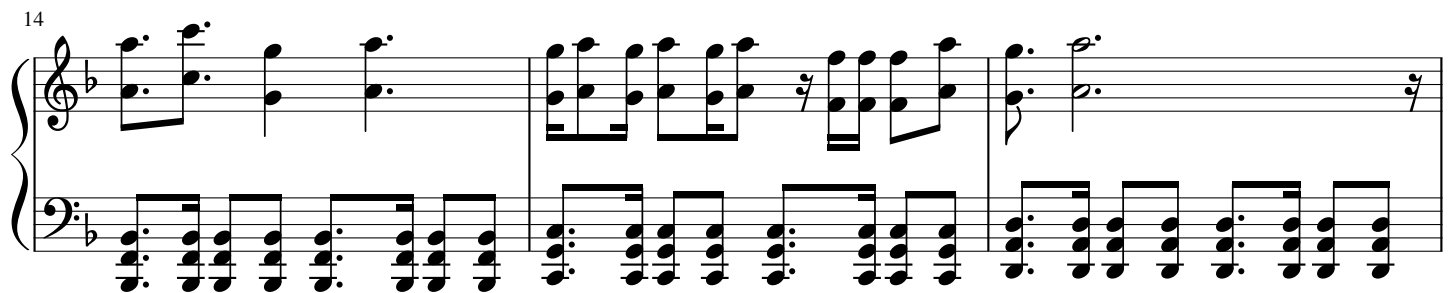
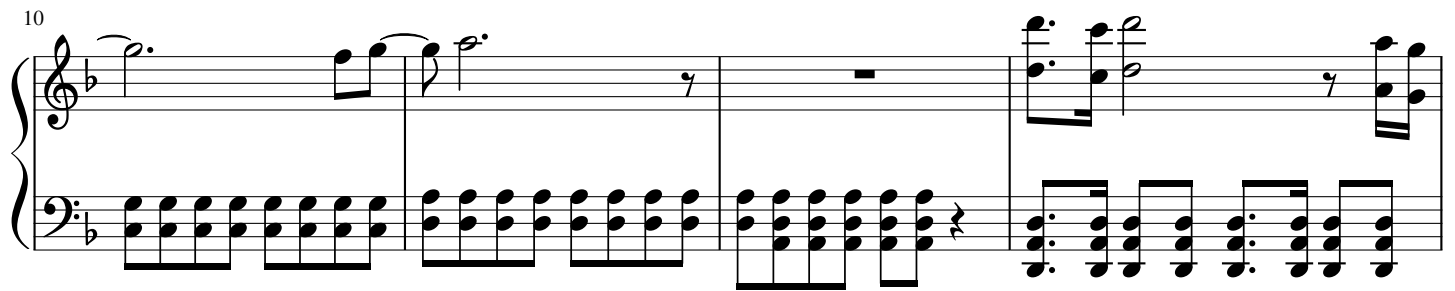
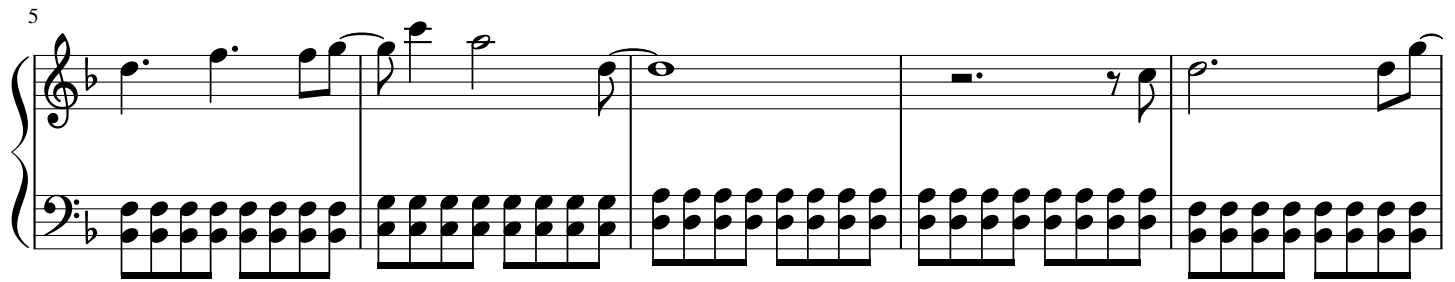
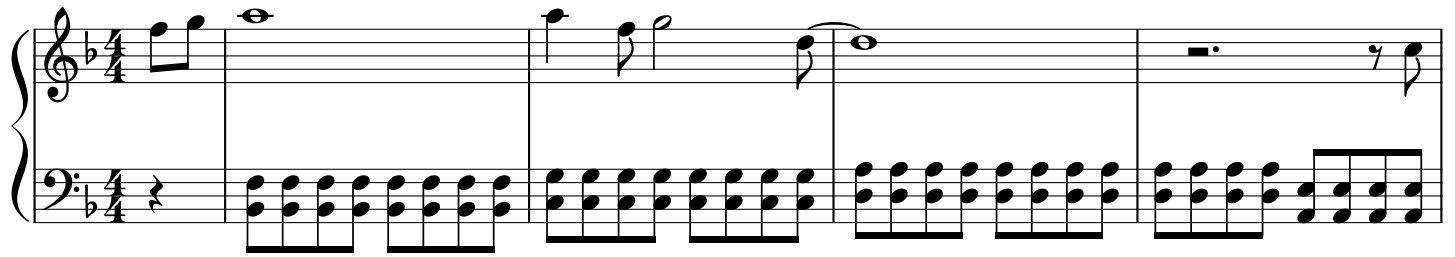


# we all lie

sky castle ost part 4

작곡/작사 최정인  
편곡 POPKID, 박상우  
노래 하진

♩ = 96



20

System 1 (measures 20-22): Treble clef staff shows a whole rest in measure 20, followed by eighth-note chords in measures 21 and 22. Bass clef staff shows a continuous eighth-note chordal accompaniment.

23

System 2 (measures 23-25): Treble clef staff shows eighth-note chords in measure 23, a whole rest in measure 24, and eighth-note chords in measure 25. Bass clef staff shows a continuous eighth-note chordal accompaniment.

26

System 3 (measures 26-29): Treble clef staff shows eighth-note chords in measures 26-28, a half note in measure 29, and a whole rest in measure 30. Bass clef staff shows a continuous eighth-note chordal accompaniment.

30

System 4 (measures 30-34): Treble clef staff shows eighth-note chords in measures 30-31, a whole rest in measure 32, eighth-note chords in measure 33, and eighth-note chords in measure 34. Bass clef staff shows a continuous eighth-note chordal accompaniment.

35

System 5 (measures 35-39): Treble clef staff shows a whole rest in measure 35, eighth-note chords in measure 36, eighth-note chords in measure 37, eighth-note chords in measure 38, and eighth-note chords in measure 39. Bass clef staff shows a continuous eighth-note chordal accompaniment.

40

System 6 (measures 40-43): Treble clef staff shows a whole rest in measure 40, eighth-note chords in measure 41, eighth-note chords in measure 42, eighth-note chords in measure 43, and eighth-note chords in measure 44. Bass clef staff shows a continuous eighth-note chordal accompaniment.

44

System 44: Treble clef has a half note G4 with a fermata, followed by a whole rest. Bass clef has a continuous eighth-note accompaniment of G3, B2, and D3. The system ends with a repeat sign.

47

System 47: Treble clef has a half note G4 with a fermata, followed by a whole rest. Bass clef has a continuous eighth-note accompaniment of G3, B2, and D3. The system ends with a repeat sign.

50

System 50: Treble clef has a half note G4 with a fermata, followed by a whole rest. Bass clef has a continuous eighth-note accompaniment of G3, B2, and D3. The system ends with a repeat sign.

53

System 53: Treble clef has a half note G4 with a fermata, followed by a whole rest. Bass clef has a continuous eighth-note accompaniment of G3, B2, and D3. The system ends with a repeat sign.

56

System 56: Treble clef has a half note G4 with a fermata, followed by a whole rest. Bass clef has a continuous eighth-note accompaniment of G3, B2, and D3. The system ends with a repeat sign.

62

System 62: Treble clef has a half note G4 with a fermata, followed by a whole rest. Bass clef has a continuous eighth-note accompaniment of G3, B2, and D3. The system ends with a repeat sign.

65

Measures 65-67. Treble clef staff: eighth notes with accents, quarter notes, and a quarter rest. Bass clef staff: continuous eighth-note accompaniment pattern.

68

Measures 68-70. Treble clef staff: whole note chord, half note chord, whole note chord. Bass clef staff: continuous eighth-note accompaniment pattern.

71

Measures 71-74. Treble clef staff: half note chord, whole note chord, half note chord, whole note chord. Bass clef staff: continuous eighth-note accompaniment pattern.

75

Measures 75-77. Treble clef staff: whole note chord, half note chord, whole note chord. Bass clef staff: continuous eighth-note accompaniment pattern.