

학습지 폰트는
어비 남소영체입니다.

폰트 다운 링크

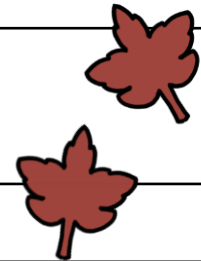
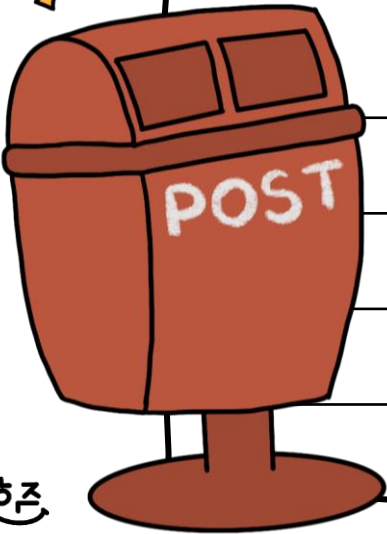
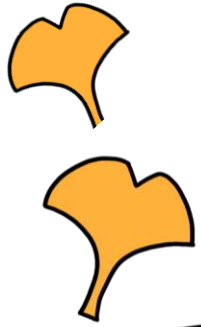
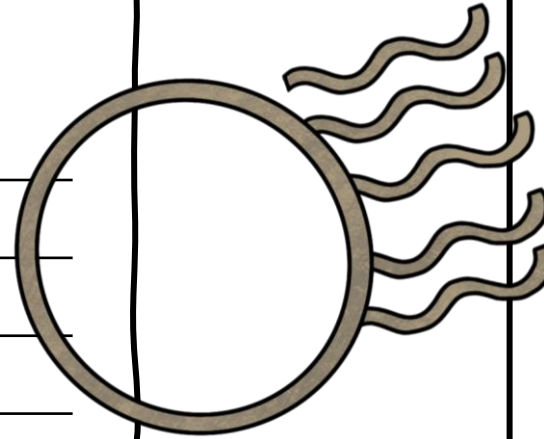
<http://uhbeefont.com/>

이름 :

10월 엽서 필사하기

년 월 일

A large rectangular area with horizontal lines for writing, intended for practicing letter copying. The lines are evenly spaced and cover most of the page's width.

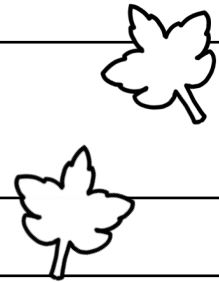
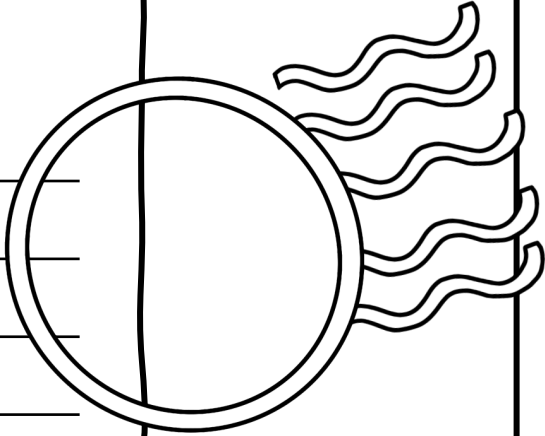
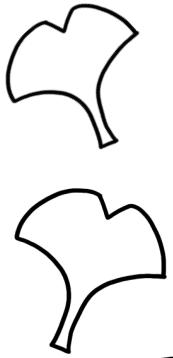


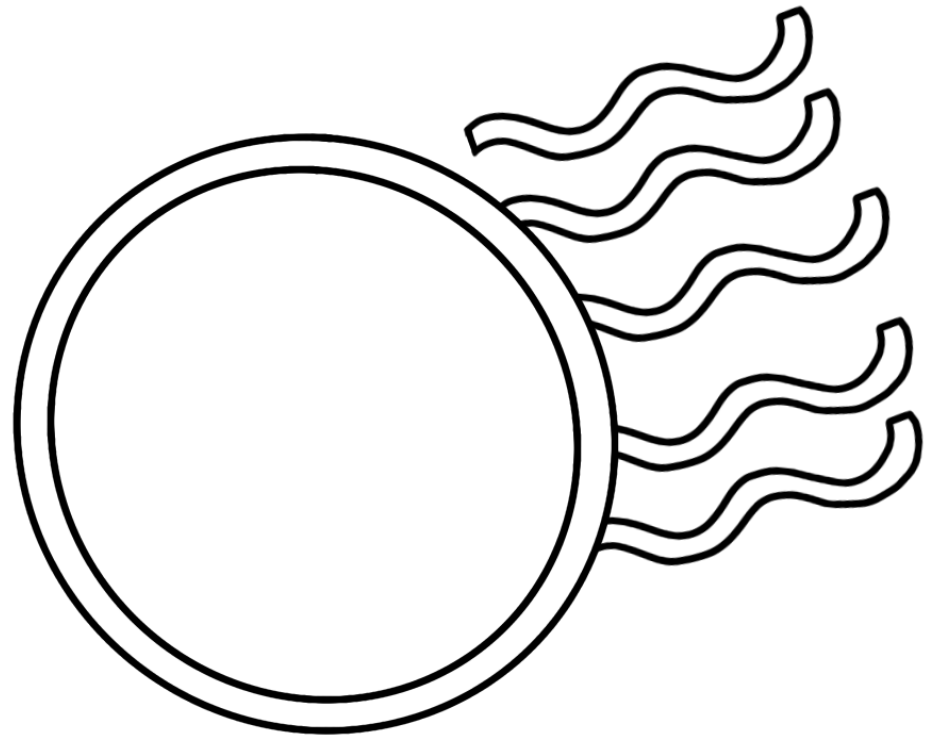
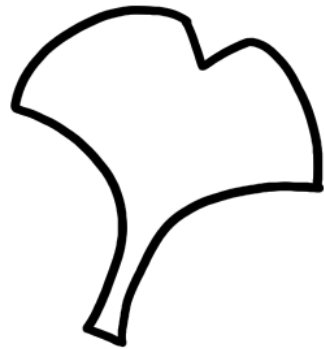
이름 :

10월엽서 필사 x 컬러링

일
월
년

A large rectangular area with a wavy border, containing ten horizontal lines for writing. The lines are arranged in two groups of five, with a gap between them. The entire area is intended for copying and coloring the poem.





<<도안>>