

UHP/ PKC
YELIZOVO 2





JEPPESEN PETROPAVLOVSK-KAMCHATSKY, RUSSIA

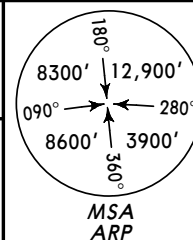
24 JUN 05

10-2

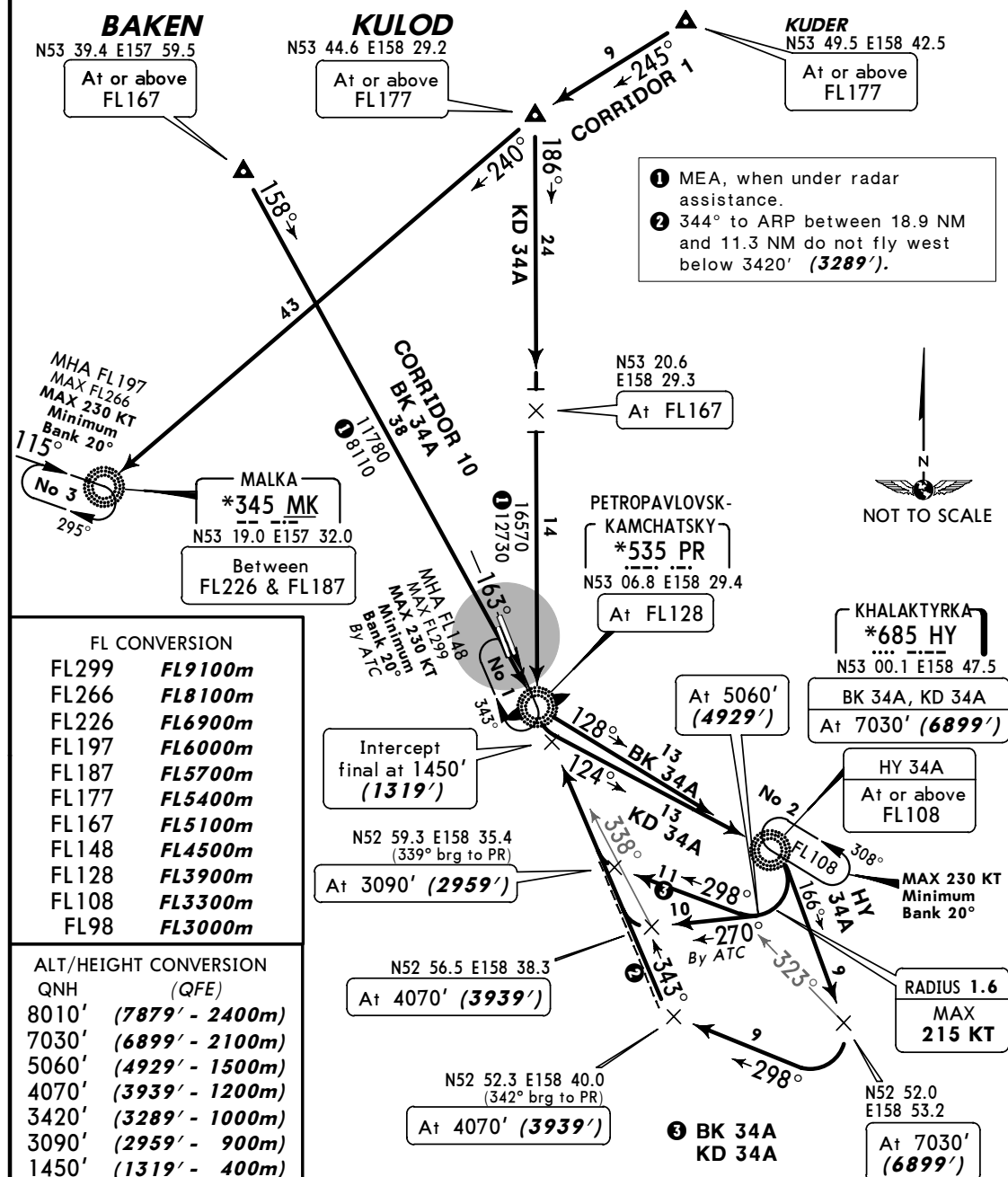
Eff 7 Jul

STAR

Alt Set: MM (hPa on request) QNH on request **(QFE)**
Trans level: FL98
 FL108 if pressure is less than 733 mm (977 hPa)
Trans alt: 8010' **(7879')**



FOR MALKA, SAMIK & TUPAN "ALFA" STARS REFER TO CHART 10-2A



Minimum bank 20° for all turns.

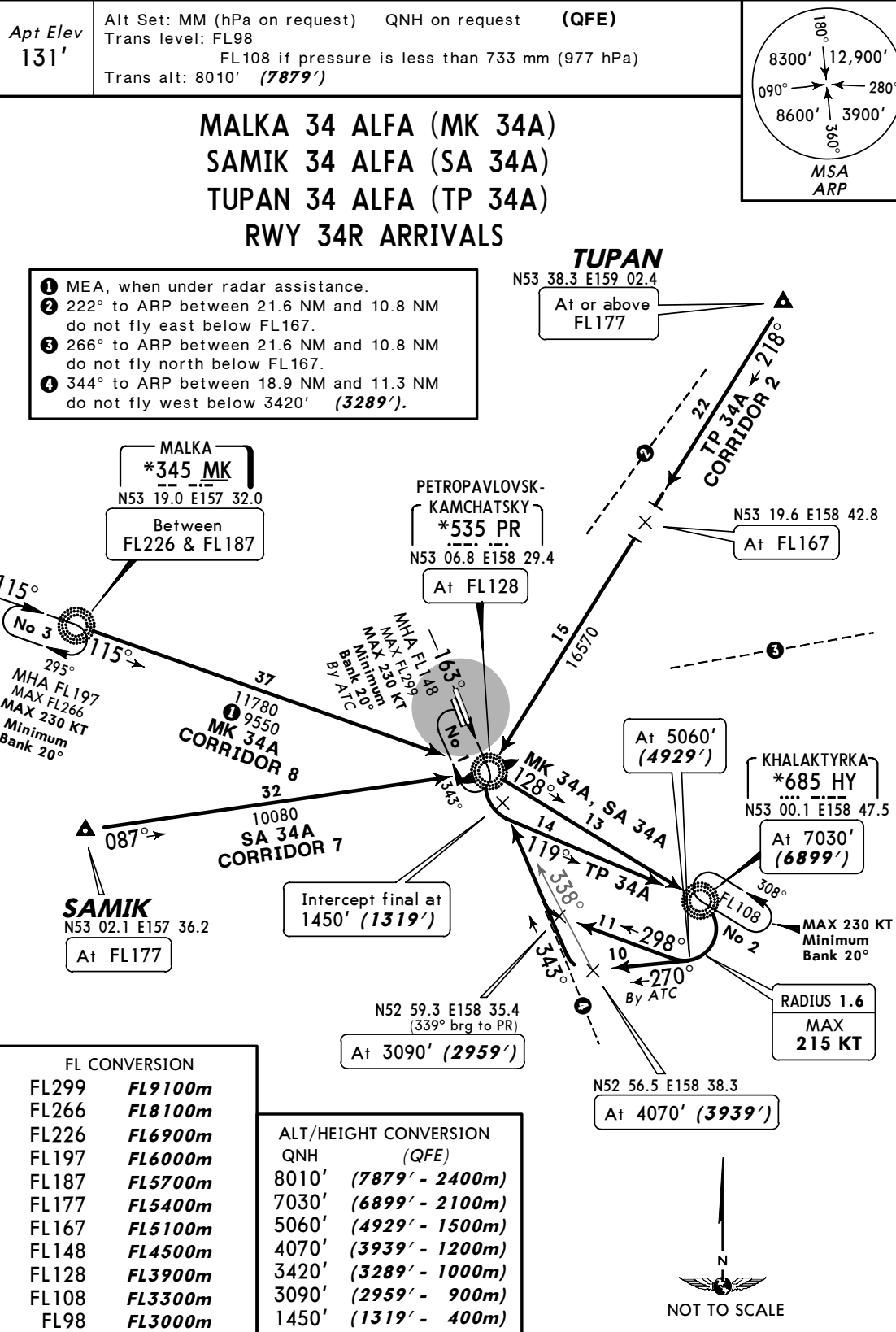
STAR	ROUTING
BK 34A	158° track to PR, turn LEFT, 128° track to HY, turn RIGHT, 298° track to N52 59.3 E158 35.4, turn RIGHT, 343° track to intercept final approach.
HY 34A By ATC	166° track to N52 52.0 E158 53.2, turn RIGHT, 298° track to N52 52.3 E158 40.0, turn RIGHT, 343° track to intercept final approach.
KD 34A	186° track via N53 20.6 E158 29.3 to PR, turn LEFT, 124° track to HY, turn RIGHT, 298° track to N52 59.3 E158 35.4, turn RIGHT, 343° track to intercept final approach.

CHANGES: Holding over PR revised.

© JEPPESEN SANDERSON, INC., 2003, 2005. ALL RIGHTS RESERVED.

UHPP/PKC JEPPESEN PETROPAVLOVSK-KAMCHATSKY, RUSSIA

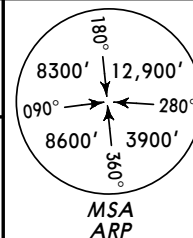
YELIZOVO 24 JUN 05 (10-2A) Eff 7 Jul STAR



UHPP/PKC **JEPPESEN PETROPAVLOVSK-KAMCHATSKY, RUSSIA**
YELIZOVO 24 JUN 05 **(10-2B)** **Eff 7 Jul** **STAR**

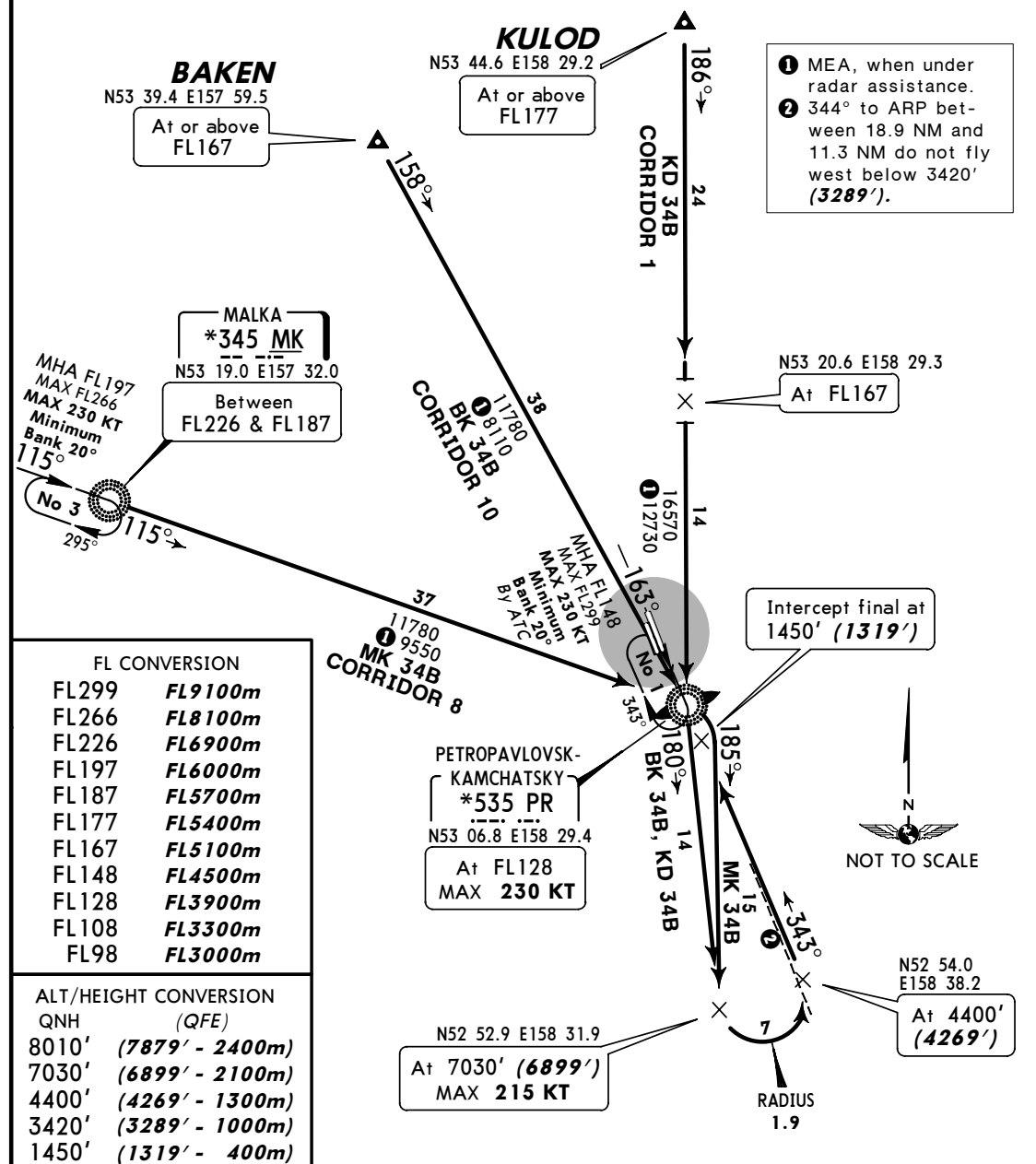
Apt Elev
131'

Alt Set: MM (hPa on request) QNH on request (QFE)
 Trans level: FL98
 FL108 if pressure is less than 733 mm (977 hPa)
 Trans alt: 8010' (7879')



BAKEN 34 BRAVO (BK 34B)
KULOD 34 BRAVO (KD 34B)
MALKA 34 BRAVO (MK 34B)
RWY 34R ARRIVALS

FOR MN, SAMIK & TUPAN "BRAVO" STARS REFER TO CHART 10-2C



Minimum bank 20° for all turns.

STAR	ROUTING
BK 34B	158° track to PR, turn RIGHT, 180° track to N52 52.9 E158 31.9, turn LEFT to N52 54.0 E158 38.2, 343° track to intercept final approach.
KD 34B	186° track via N53 20.6 E158 29.3 to PR, turn LEFT, 180° track to N52 52.9 E158 31.9, turn LEFT to N52 54.0 E158 38.2, 343° track to intercept final approach.
MK 34B	115° track to PR, turn RIGHT, 185° track to N52 52.9 E158 31.9, turn LEFT to N52 54.0 E158 38.2, 343° track to intercept final approach.

CHANGES: Holding over PR revised.

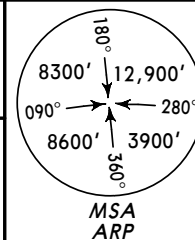
© JEPPESEN SANDERSON, INC., 2003, 2005. ALL RIGHTS RESERVED.

UHPP/PKC JEPPESEN PETROPAVLOVSK-KAMCHATSKY, RUSSIA

YELIZOVO 24 JUN 05 (10-2C) Eff 7 Jul **STAR**

Apt Elev
131'

Alt Set: MM (hPa on request) QNH on request (QFE)
Trans level: FL98
FL108 if pressure is less than 733 mm (977 hPa)
Trans alt: 8010' (7879')

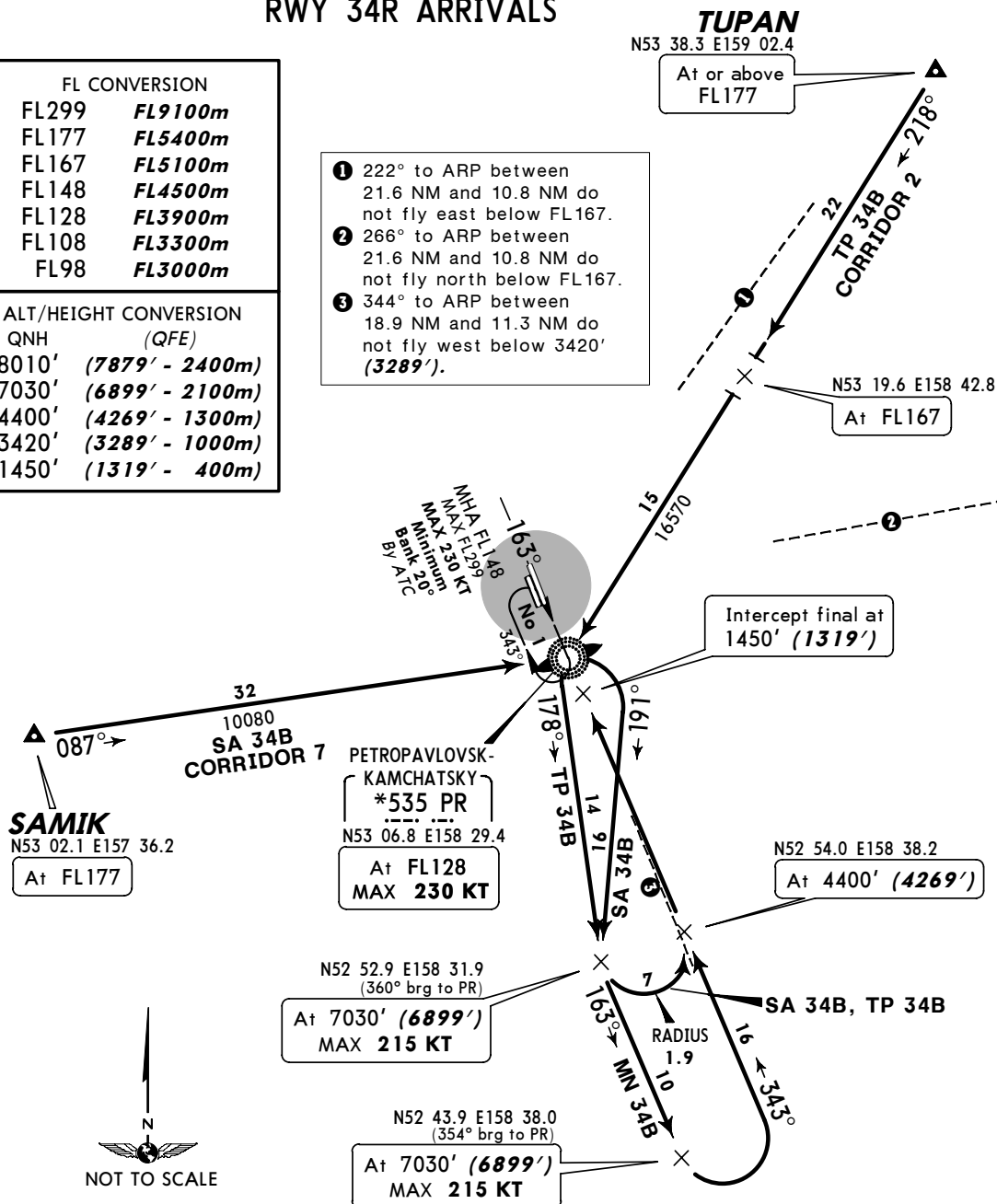


MN 34 BRAVO (MN 34B) SAMIK 34 BRAVO (SA 34B) TUPAN 34 BRAVO (TP 34B) RWY 34R ARRIVALS

FL CONVERSION	
FL299	FL9100m
FL177	FL5400m
FL167	FL5100m
FL148	FL4500m
FL128	FL3900m
FL108	FL3300m
FL98	FL3000m

ALT/HEIGHT CONVERSION	
QNH	(QFE)
8010'	(7879' - 2400m)
7030'	(6899' - 2100m)
4400'	(4269' - 1300m)
3420'	(3289' - 1000m)
1450'	(1319' - 400m)

- 222° to ARP between 21.6 NM and 10.8 NM do not fly east below FL167.
- 266° to ARP between 21.6 NM and 10.8 NM do not fly north below FL167.
- 344° to ARP between 18.9 NM and 11.3 NM do not fly west below 3420' (3289').



Minimum bank 20° for all turns.

STAR	ROUTING
MN 34B By ATC	At N52 52.9 E158 31.9 turn LEFT, 163° track to N52 43.9 E158 38.0, turn LEFT, 343° track via N52 54.0 E158 38.2 to intercept final approach.
SA 34B	087° track to PR, turn RIGHT, 191° track to N52 52.9 E158 31.9, turn LEFT to N52 54.0 E158 38.2, 343° track to intercept final approach.
TP 34B	218° track via N53 19.6 E158 42.8 to PR, turn LEFT, 178° track to N52 52.9 E158 31.9, turn LEFT to N52 54.0 E158 38.2, 343° track to intercept final approach.

CHANGES: Holding over PR revised.

© JEPPESEN SANDERSON, INC., 2003, 2005. ALL RIGHTS RESERVED.

UHP/ PKC
YELIZOVO 2

28 APR 06

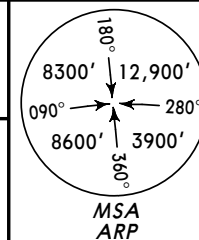
28 APR 06

(10-2D)

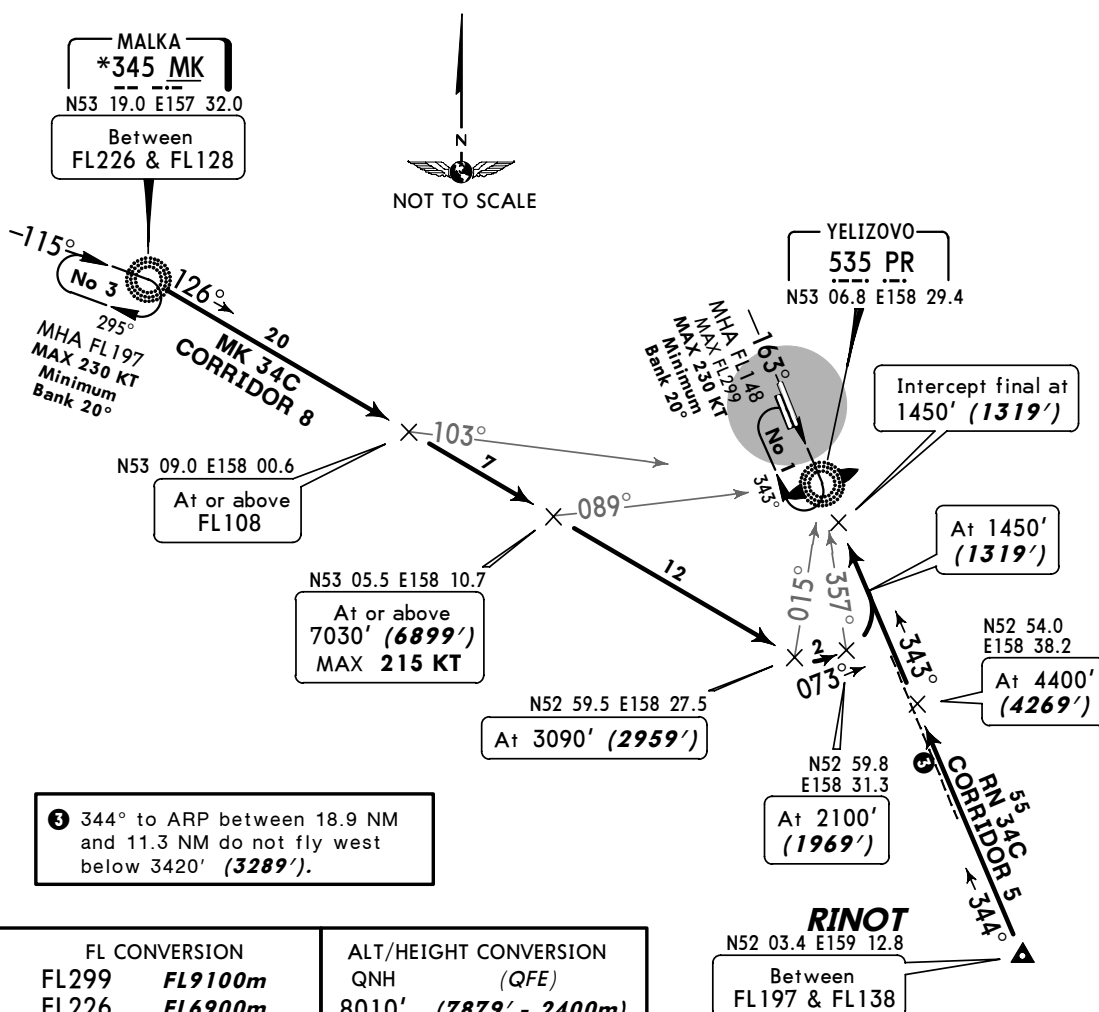
Eff 11 May

STAR

Alt Set: MM (hPa on request) QNH on request **(QFE)**
Trans level: FL98
FL108 if pressure is less than 733 mm (977 hPa)
Trans alt: 8010' **(7879')**



**MALKA 34 CHARLIE (MK 34C)
RINOT 34 CHARLIE (RN 34C)
RWY 34R ARRIVALS
BY ATC**



FL CONVERSION		ALT/HEIGHT CONVERSION	
FL299	FL9100m	QNH	(QFE)
FL226	FL6900m	8010'	(7879' - 2400m)
FL197	FL6000m	7030'	(6899' - 2100m)
FL148	FL4500m	4400'	(4269' - 1300m)
FL138	FL4200m	3420'	(3289' - 1000m)
FL128	FL3900m	3090'	(2959' - 900m)
FL108	FL3300m	2100'	(1969' - 600m)
FL98	FL3000m	1450'	(1319' - 400m)

Minimum bank 20° for all turns.

STAR	ROUTING
MK 34C 12	126° track via N53 09.0 E158 00.6 and N53 05.5 E158 10.7 to N52 59.5 E158 27.5, turn LEFT, 073° track to N52 59.8 E158 31.3, turn LEFT, 343° track to intercept final approach.
RN 34C	344° track to N52 54.0 E158 38.2. 343° track to intercept final approach.

- ① Radar control required.
- ② If radar control or MK not available, proceed to PR at or above the safe flight level, then as directed by ATC.

UHPP/PKC

JEPPesen

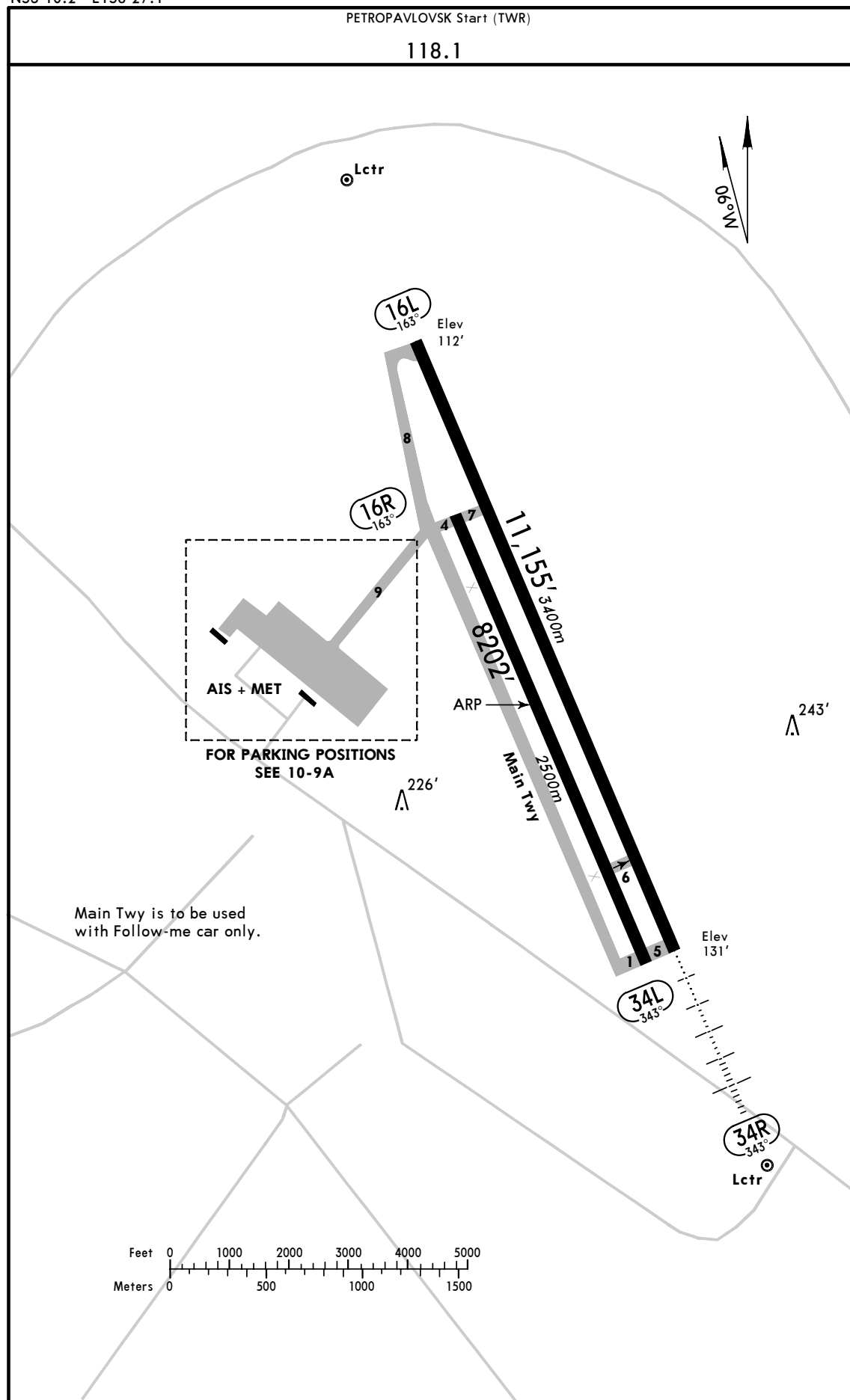
PETROPAVLOVSK-KAMCHATSKY, RUSSIA

Apt Elev 131'
N53 10.2 E158 27.1

30 SEP 05

(10-9)

YELIZOVO



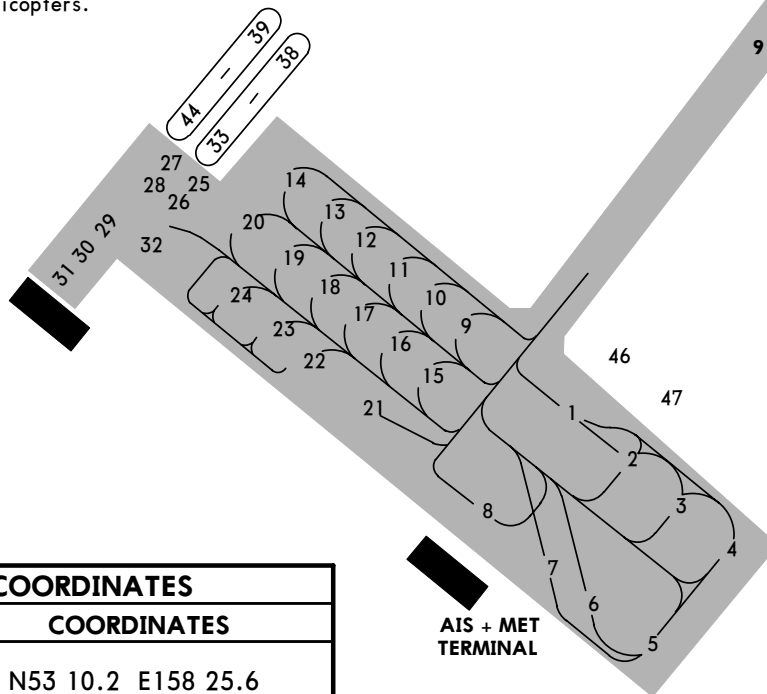
CHANGES: None.

© JEPPESEN SANDERSON, INC., 2002, 2005. ALL RIGHTS RESERVED.

UHPP/PKC JEPPESEN PETROPAVLOVSK-KAMCHATSKY, RUSSIA

30 SEP 05 **10-9A** YELIZOVO

Stands 27 thru 32
available for helicopters.



INS COORDINATES

STAND No.	COORDINATES
1	N53 10.2 E158 25.6
4	N53 10.1 E158 25.7
5	N53 10.0 E158 25.6
9	N53 10.2 E158 25.5
14	N53 10.3 E158 25.4

GENERAL

Birds.

ADDITIONAL RUNWAY INFORMATION

RWY				USABLE LENGTHS		TAKE-OFF	WIDTH
				Threshold	Glide Slope		
16L	HIRL (60m)	RVR				①	197' 60m
34R	HIRL (60m) HIALS	RVR					

① TAKE-OFF RUN AVAILABLE

RWY 16L:

From rwy head 11,155' (3400m)
twy 7 int 8169' (2490m)

RWY 34R:

From rwy head 11,155' (3400m)
twy 6 int 9843' (3000m)

16R	② 34L					197' 60m
-----	-------	--	--	--	--	-------------

② Rwy is used for taxiing only.

TAKE-OFF

AIR CARRIER (JAA)

Rwy 16L/34R

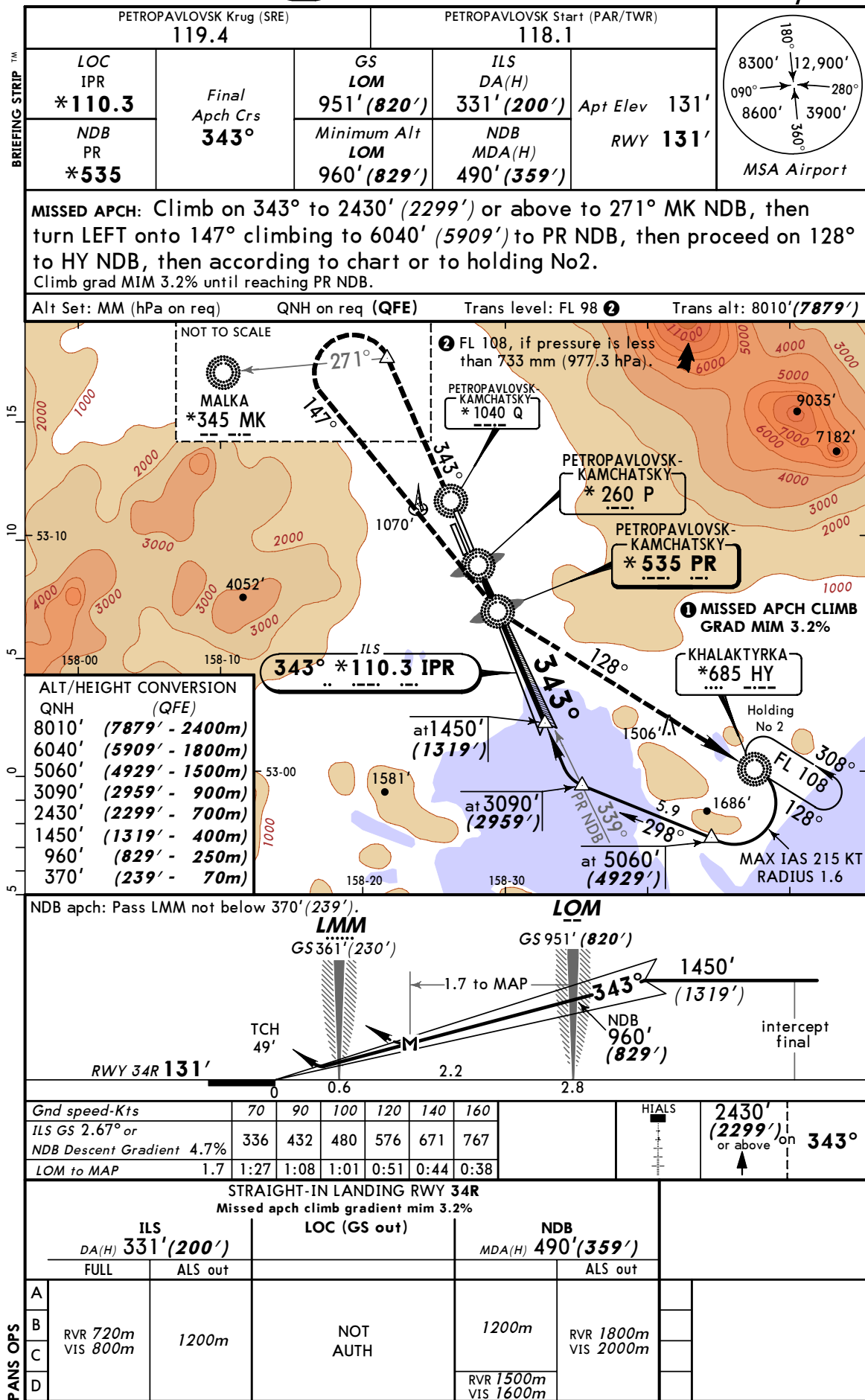
LVP must be in force

RCLM (DAY only)
or RL

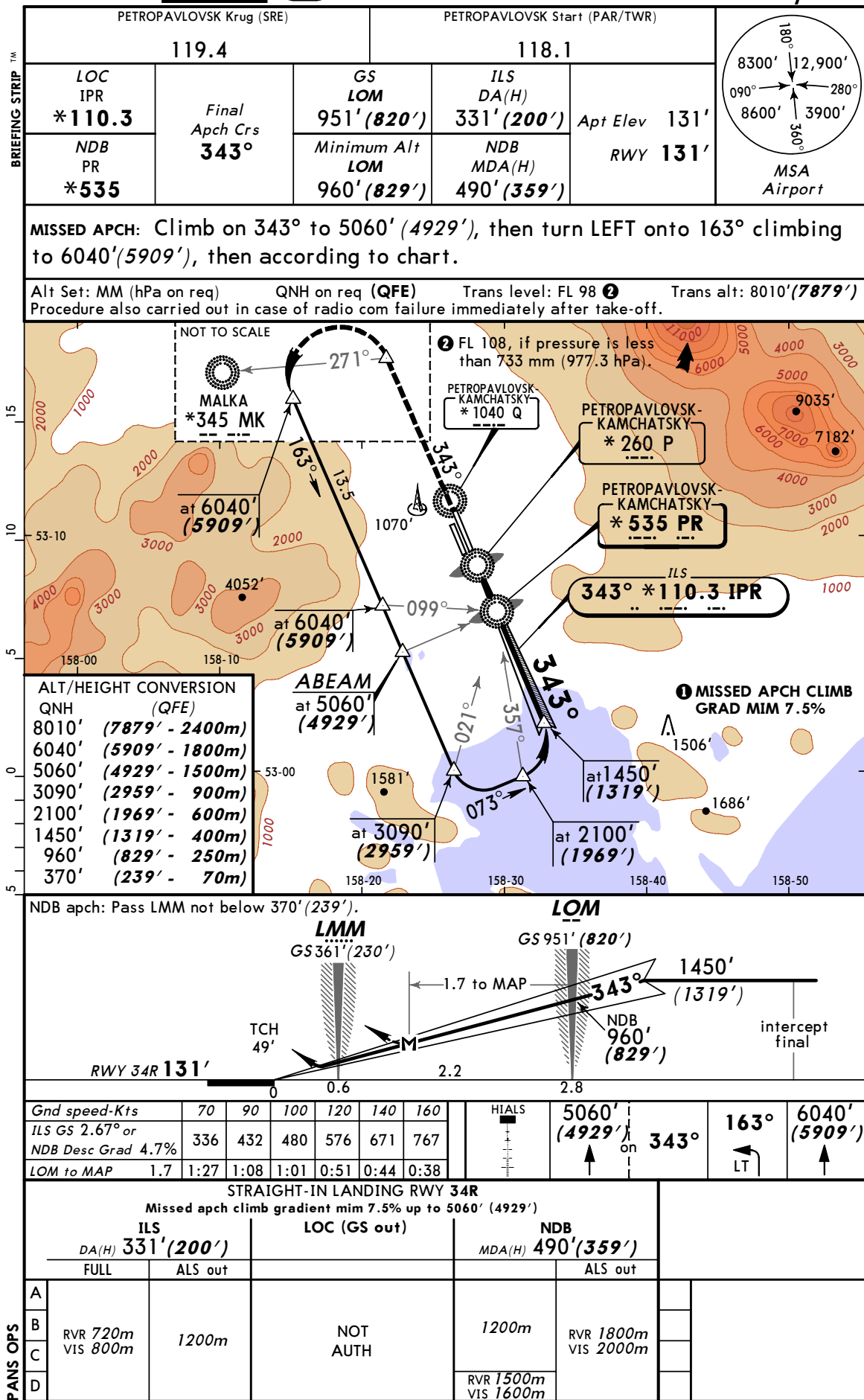
RCLM (DAY only)
or RL

A		
B	250m	400m
C		
D	300m	

UHPP/PKC JEPPESEN PETROPAVLOVSK-KAMCHATSKY, RUSSIA YELIZOVO 10 DEC 04 (11-1) Eff 23 Dec 1 ILS- or 2 NDB- Alfa Rwy 34R

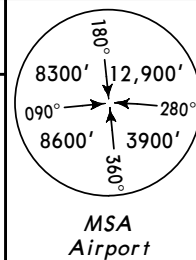


UHPP/PKC PETROPAVLOVSK-KAMCHATSKY, RUSSIA YELIZOVO 10 DEC 04 Eff 23 Dec 11-2 ILS- or 2 NDB- Bravo-1 Rwy 34R



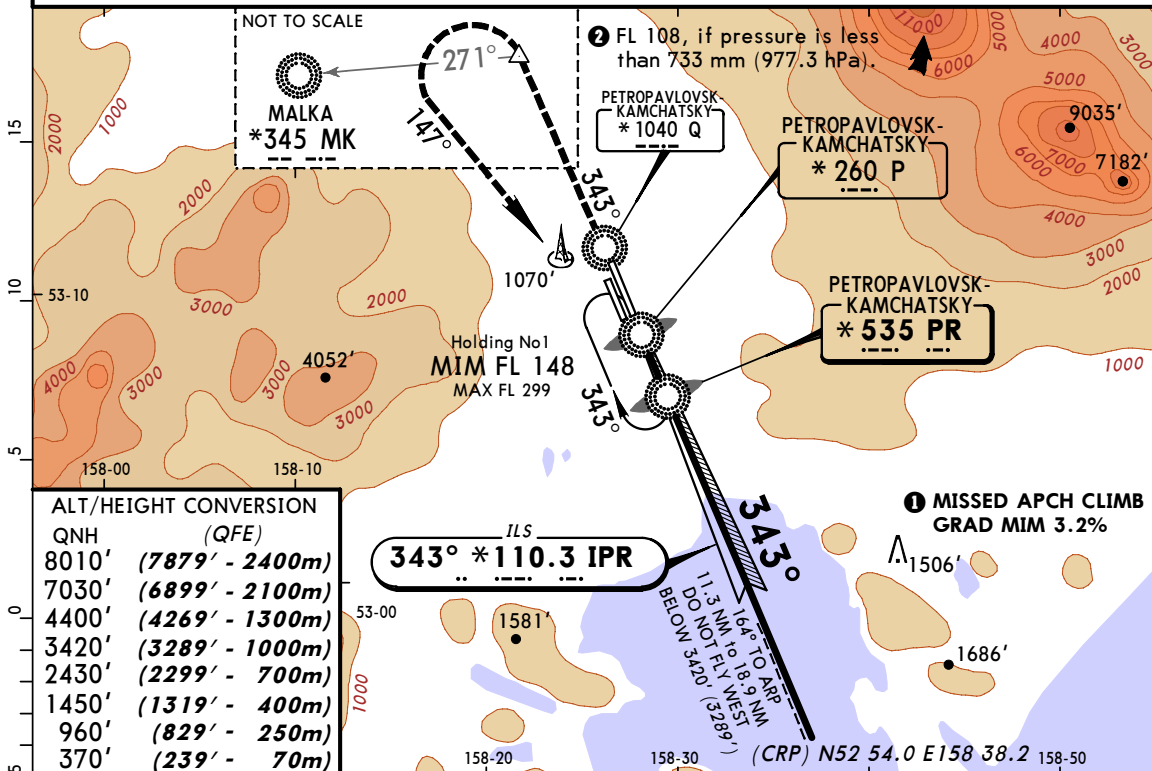
UHPP/PKC **JEPPESEN** PETROPAVLOVSK-KAMCHATSKY, RUSSIA YELIZOVO 10 DEC 04 Eff 23 Dec 11-3 **ILS- or 2 NDB- Bravo-2 Rwy 34R**

PETROPAVLOVSK Krug (SRE)			PETROPAVLOVSK Start (PAR/TWR)		
119.4			118.1		
LOC IPR *110.3	Final Apch Crs 343°	GS LOM 951' (820')	ILS DA(H) 331' (200')	Apt Elev 131'	
NDB PR *535		Minimum Alt LOM 960' (829')	NDB MDA(H) 490' (359')	RWY 131'	

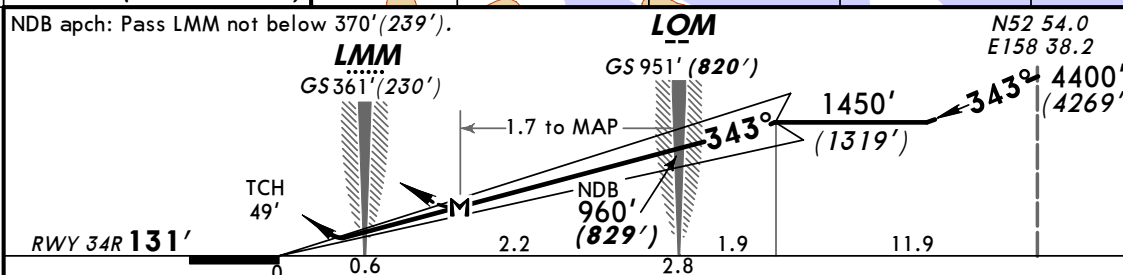


MISSED APCH: Climb on 343° to 2430' (2299') or above to 271° MK NDB, then turn LEFT onto 147° climbing to 7030' (6899') to PR NDB, then proceed to holding No 1. Climb grad MIM 3.2% until reaching PR NDB.

Alt Set: MM (hPa on req) QNH on req (QFE) Trans level: FL 98 2 Trans alt: 8010' (7879')



ALT/HEIGHT CONVERSION	
QNH	(QFE)
8010'	(7879' - 2400m)
7030'	(6899' - 2100m)
4400'	(4269' - 1300m)
3420'	(3289' - 1000m)
2430'	(2299' - 700m)
1450'	(1319' - 400m)
960'	(829' - 250m)
370'	(239' - 70m)



Gnd speed-Kts	70	90	100	120	140	160
ILS GS 2.67° or	336	432	480	576	671	767
NDB Desc Grad 4.7%						
LOM to MAP	1.7	1:08	1:01	0:51	0:44	0:38

STRAIGHT-IN LANDING RWY 34R					
Missed apch climb gradient mim 3.2%					
ILS		LOC (GS out)		NDB	
DA(H) 331' (200')				MDA(H) 490' (359')	
FULL	ALS out			ALS out	
A					
B	RVR 720m VIS 800m	NOT AUTH		1200m	RVR 1800m VIS 2000m
C					
D				RVR 1500m VIS 1600m	