

**MARVEL** STUDIOS

# SPIDER-MAN

*Far From Home*

Yvonne Van What

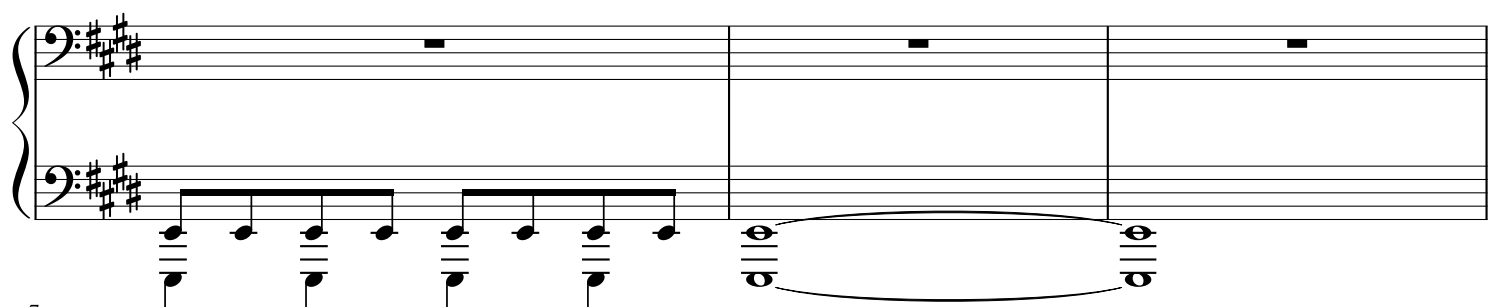
Official Trailer Music

Rodger Clutter

♩ = 120



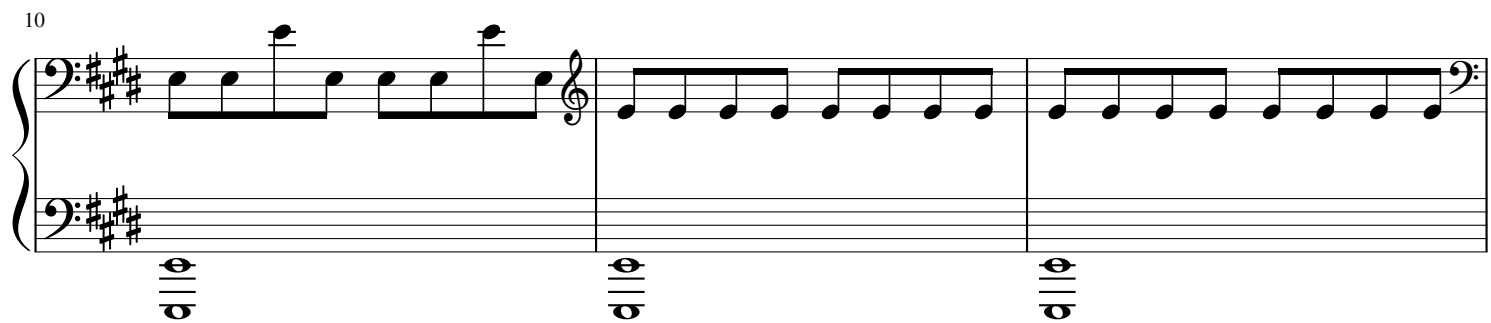
4



7



10



13

System 13: Treble and Bass staves in A major (three sharps). The treble staff begins with a whole rest, followed by four quarter notes (F#, G, A, B). The bass staff features a whole note chord (F#, C#) and a rhythmic pattern of eighth and quarter notes. A double bar line occurs after the first measure.

16

System 16: Treble and Bass staves. The treble staff has a continuous eighth-note melody. The bass staff continues the eighth-note accompaniment. A double bar line occurs after the second measure.

19

System 19: Treble and Bass staves. The treble staff features a sixteenth-note melody. The bass staff continues the eighth-note accompaniment. A double bar line occurs after the second measure.

22

System 22: Treble and Bass staves. The treble staff contains whole rests. The bass staff continues the eighth-note accompaniment. A double bar line occurs after the second measure.

25

System 25: Treble and Bass staves. The treble staff contains whole rests. The bass staff features a sixteenth-note melody. A double bar line occurs after the second measure.

28

Measures 28-30 of a musical score in A major (three sharps). The right hand has whole rests in measures 28 and 29, then plays a quarter-note ascending scale (F#4, G#4, A5, B5) followed by a dotted quarter note (C#5). The left hand plays a half-note descending scale (F#3, E3, D3, C3) in measure 28, then a quarter-note ascending scale (C3, D3, E3, F#3) in measure 29, and continues with a quarter-note ascending scale (F#3, G#3, A4, B4) in measure 30.

31

Measures 31-33 of a musical score in A major. The right hand plays a quarter-note ascending scale (F#4, G#4, A5, B5) followed by a dotted quarter note (C#5) in measures 31 and 32, then a quarter-note ascending scale (F#4, G#4, A5, B5) followed by a dotted quarter note (C#5) in measure 33. The left hand continues with a quarter-note ascending scale (F#3, G#3, A4, B4) in measures 31 and 32, and then a quarter-note ascending scale (F#3, G#3, A4, B4) followed by a dotted quarter note (C#5) in measure 33.

34

Measures 34-36 of a musical score in A major. The right hand has whole rests in measures 34 and 35, then plays a quarter-note ascending scale (F#4, G#4, A5, B5) in measure 36. The left hand continues with a quarter-note ascending scale (F#3, G#3, A4, B4) in measures 34 and 35, and then a quarter-note ascending scale (F#3, G#3, A4, B4) followed by a dotted quarter note (C#5) in measure 36.

37

Measures 37-39 of a musical score in A major. The right hand plays a quarter-note ascending scale (F#4, G#4, A5, B5) followed by a dotted quarter note (C#5) in measures 37 and 38, then a quarter-note ascending scale (F#4, G#4, A5, B5) followed by a dotted quarter note (C#5) in measure 39. The left hand continues with a quarter-note ascending scale (F#3, G#3, A4, B4) in measures 37 and 38, and then a quarter-note ascending scale (F#3, G#3, A4, B4) followed by a dotted quarter note (C#5) in measure 39.

40

Measures 40-42 of a musical score in A major. The right hand has whole rests in measures 40 and 41, then plays a quarter-note ascending scale (F#4, G#4, A5, B5) followed by a dotted quarter note (C#5) in measure 42. The left hand continues with a quarter-note ascending scale (F#3, G#3, A4, B4) in measures 40 and 41, and then a quarter-note ascending scale (F#3, G#3, A4, B4) followed by a dotted quarter note (C#5) in measure 42.

43

A musical score for the song "The Rose Tree". The score is written for a piano, with a treble and bass staff. The key signature is one sharp (F#), and the time signature is 4/4. The melody is in the treble staff, and the bass staff provides a simple accompaniment. The score consists of five measures. The first measure has a treble staff with a quarter note on G4 and a bass staff with a quarter note on G2. The second measure has a treble staff with a quarter note on A4 and a bass staff with a quarter note on G2. The third measure has a treble staff with a quarter note on B4 and a bass staff with a quarter note on G2. The fourth measure has a treble staff with a quarter note on C5 and a bass staff with a quarter note on G2. The fifth measure has a treble staff with a quarter note on B4 and a bass staff with a quarter note on G2. The score ends with a double bar line and a repeat sign.

48

A musical score for the song 'The Rose Tree'. It features a treble and bass staff. The treble staff contains the melody, which includes a triplet of eighth notes in the second measure. The bass staff provides a simple harmonic accompaniment. The key signature has one sharp (F#), and the time signature is 4/4. The score is divided into two systems, each containing three measures. The first system ends with a double bar line and repeat dots. The second system ends with a double bar line and repeat dots.

51

A musical score for the song 'The Rose Tree'. It consists of two staves. The top staff is in treble clef with a key signature of one sharp (F#) and a 3/4 time signature. The bottom staff is in bass clef with the same key signature and time signature. The melody is written in the treble staff, and the bass staff provides a simple harmonic accompaniment. The score is divided into three measures. The first measure contains a quarter rest, a quarter note G4, an eighth note A4, a quarter note B4, an eighth note A4, a quarter note G4, and a quarter note F#4. The second measure contains a quarter note G4, a quarter note F#4, a quarter note E4, a quarter note D4, and a quarter note C4. The third measure contains a quarter note B4, a quarter note A4, a quarter note G4, a quarter note F#4, a quarter note E4, and a quarter note D4. The bass staff has a whole note chord of G2, B1, and D2 in the first measure, a whole note chord of G2, B1, and D2 in the second measure, and a whole note chord of G2, B1, and D2 in the third measure.

**♩ = 180**

54

A musical score for the song 'The Rose Tree'. It features a piano introduction in 3/4 time, marked 'Andante'. The score is written for piano (left hand) and voice (right hand). The piano part begins with a series of chords in the left hand, while the right hand plays a melody. The melody starts with a quarter note 'C' (middle C) and a half note 'D' (D4), followed by a quarter note 'E' (E4) and a half note 'F' (F4). The melody continues with a quarter note 'G' (G4) and a half note 'A' (A4), followed by a quarter note 'B' (B4) and a half note 'C' (C5). The melody concludes with a quarter note 'D' (D5) and a half note 'E' (E5). The piano part provides harmonic support with chords in the left hand. The score is divided into two systems. The first system contains the piano introduction and the first line of the melody. The second system contains the second line of the melody and the piano accompaniment. The score is written in G major (one sharp) and 3/4 time. The tempo is marked 'Andante'. The key signature is one sharp (F#). The time signature is 3/4. The score is for piano and voice.

57

A musical score for the song "The Rose Tree". It features a treble and bass staff with a key signature of three sharps (F#, C#, G#) and a common time signature (C). The melody is written in the treble staff, and the accompaniment is in the bass staff. The piece consists of two measures. The first measure shows the beginning of the melody and accompaniment. The second measure continues the melody and accompaniment, ending with a double bar line.

60

Measures 60-62. Treble clef: Melodic line with eighth notes. Bass clef: Bass line with eighth notes. Measure 62 features a whole note chord in the treble.

63

Measures 63-65. Treble clef: Whole note chord in measure 63, followed by a melodic line. Bass clef: Bass line with eighth notes. Measure 65 features a whole note chord in the treble.

66

Measures 66-68. Treble clef: Whole note chord in measure 66, followed by a melodic line. Bass clef: Bass line with eighth notes. Measure 68 features a whole note chord in the treble.

69

Measures 69-71. Treble clef: Whole note chord in measure 69, followed by a melodic line. Bass clef: Bass line with eighth notes. Measure 71 features a whole note chord in the treble.

72

Measures 72-74. Treble clef: Whole note chord in measure 72, followed by a melodic line. Bass clef: Bass line with eighth notes. Measure 74 features a whole note chord in the treble.

75

Measures 75-77 of a musical score in A major (three sharps). Measure 75 features a treble clef with a whole rest and a bass clef with a descending eighth-note scale. Measure 76 has whole rests in both staves. Measure 77 contains a treble clef with a half-note chord (F#4, A4) and a bass clef with a half-note chord (F#2, A2).

78

Measures 78-80 of a musical score in A major. Measure 78 has a treble clef with a half-note chord (F#4, A4) and a bass clef with a descending eighth-note scale. Measure 79 features a treble clef with a half-note chord (F#4, A4) and a bass clef with a triplet of eighth notes (F#2, A2, C#3). Measure 80 has whole rests in both staves.

81

Measures 81-84 of a musical score in A major. Measures 81 and 82 have whole rests in both staves. Measure 83 features a treble clef with a whole rest and a bass clef with a triplet of eighth notes (F#2, A2, C#3). Measure 84 contains a treble clef with a whole rest and a bass clef with a descending eighth-note scale.

85

Measures 85-87 of a musical score in A major. Measure 85 has a treble clef with a whole rest and a bass clef with a half-note chord (F#2, A2). Measure 86 features a treble clef with a half-note chord (F#4, A4) and a bass clef with a descending eighth-note scale. Measure 87 contains a treble clef with a half-note chord (F#4, A4) and a bass clef with a half-note chord (F#2, A2).

88

Measures 88-90 of a musical score in A major. Measure 88 has a treble clef with a half-note chord (F#4, A4) and a bass clef with a descending eighth-note scale. Measure 89 features a treble clef with a half-note chord (F#4, A4) and a bass clef with a half-note chord (F#2, A2). Measure 90 contains a treble clef with a half-note chord (F#4, A4) and a bass clef with a half-note chord (F#2, A2).

