

ENG

Translation of the original operating instructions manual



PELLENC POWER TOOLS BATTERY 250

Operating instructions

56_158890-B
05/2022

READ THE USER GUIDE CAREFULLY BEFORE USE



www.pellenc.com

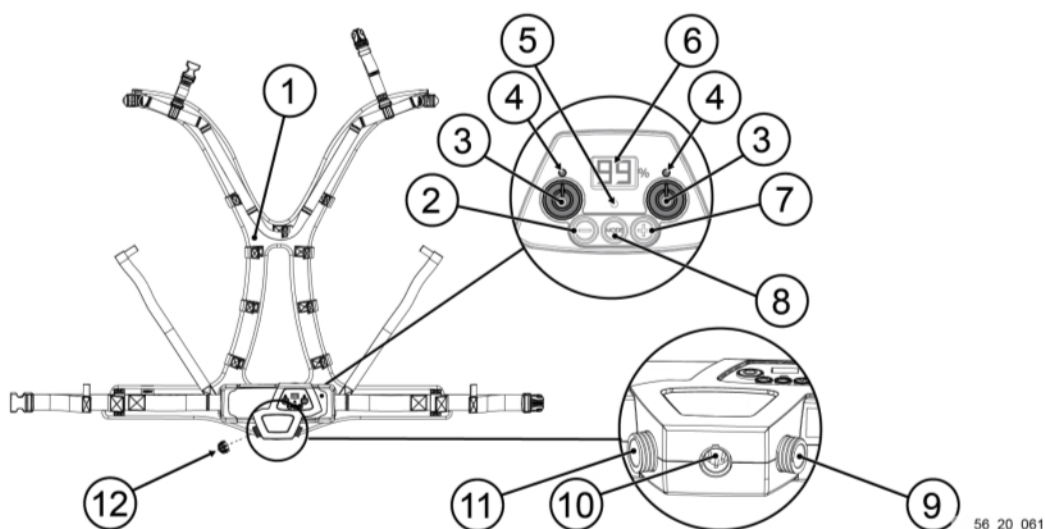
PELLENC



The RBRC™ sticker (found on the packaging) indicates that PELLENC voluntarily participates in an industry program for the collection and recycling of used batteries in the United States and Canada.

3. DESCRIPTION AND TECHNICAL FEATURES

3.1. DESCRIPTION



1. Adjustable harness
2. Decrease button
3. Right and left on/off buttons
4. Right and left power LEDs
5. Recharging indicator light
6. HMI display screen

7. Increase button
8. Mode switch button
9. Right connector: reserved for pruning shears
10. Charging connector
11. Left connector: for 1.2 kW tools only
12. Protective cap for the left connector

Note

A 1.2 kW tool can be connected at the same time using the second connector.

3.2. BATTERY TECHNICAL FEATURES

Name	Ulib 250
Rated battery voltage	43.2 V
Type of battery	24 cells in 1 pack
Battery capacity	5.8 Ah
Battery power	1,728 W
Battery energy	251 Wh
Battery life	Depending on the tool
Weight of the battery unit	1680 grams (without cable)
Operating frequency bands	13.56 MHz
Max. transmitted RF power	-41 dBm

3.3. TECHNICAL CHARACTERISTICS - CHARGER

Charger CB5010HV		
Charger reference	132649	
Voltage	100-240V ~50/60Hz Class II	
Charging voltage	50.2 V DC	
Charging current	1 A dc maximum	

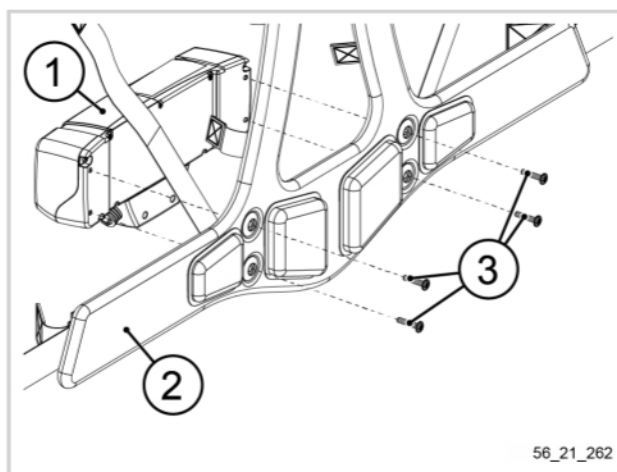
Type of charger	Charge percentage 250 battery	250 battery charging time
Charger CB5010HV (1 A)	70%	4 h
	100%	7 h

4. COMMISSIONING

4.1. FITTING THE BATTERY ON THE HARNESS

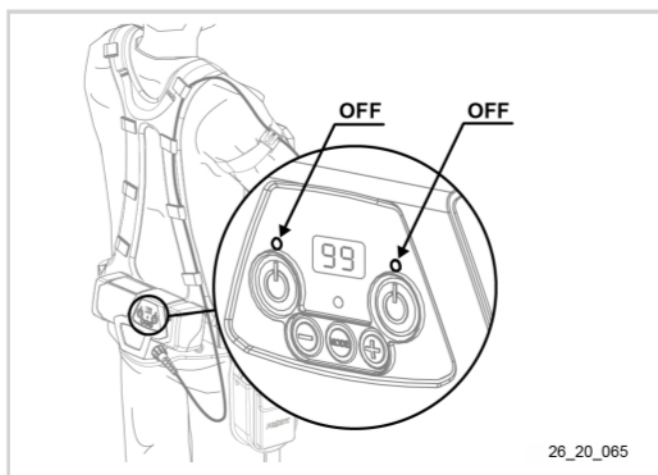
NOTE: The following procedure is valid for the purchase of a single battery delivered not fitted on the harness.

1. Fitting the battery (1) on the harness (2).
2. Install and tighten the 4 screws (3).

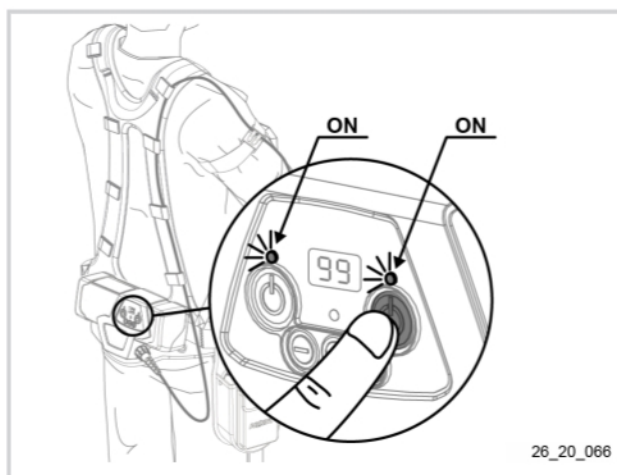


56_21_262

4.2. SWITCHING THE BATTERY ON AND OFF



26_20_065



26_20_066

Powering on

1. If the HMI display is off, press one of the 2 On/Off buttons to wake up the battery from standby.

Note

The HMI display shows the remaining battery capacity and the power-on LED remains off when leaving standby.

- Press one of the 2 battery On/Off buttons.

Powering off

- Press one of the 2 battery On/Off buttons.

Note

The power-on LED lights up when the power is turned on and goes out when the power is turned off.

For more information about switching on and off with both tools, see Section 5.1, "Usage method with both tools".

4.3. HMI DISPLAY

The battery is equipped with an HMI display that shows the remaining capacity of the battery. The capacity is expressed as a percentage.

- The display shows 99%, the battery is fully charged.
- If the display shows > 55% after one day's work, it is not necessary to recharge the battery before a second similar day of work.
- The display shows 00% or a value very close to it, you must recharge immediately.

4.4. CHARGING

Before using the battery for the first time in the season, perform a full charge.

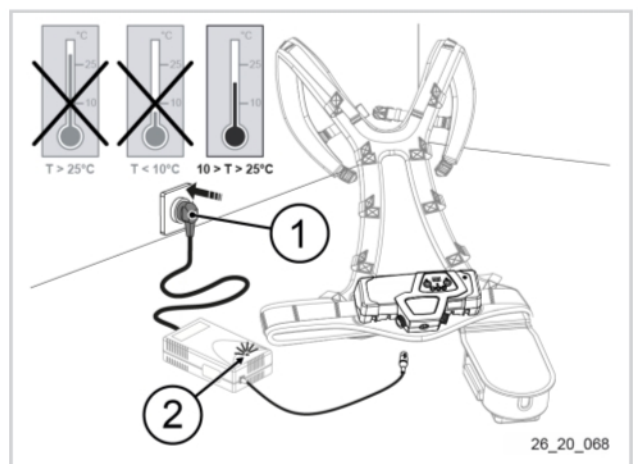


Caution

Before connecting the charger to the mains, check that your power system characteristics comply with the specifications given on the charger (see Section 3.3, "Technical characteristics - Charger").

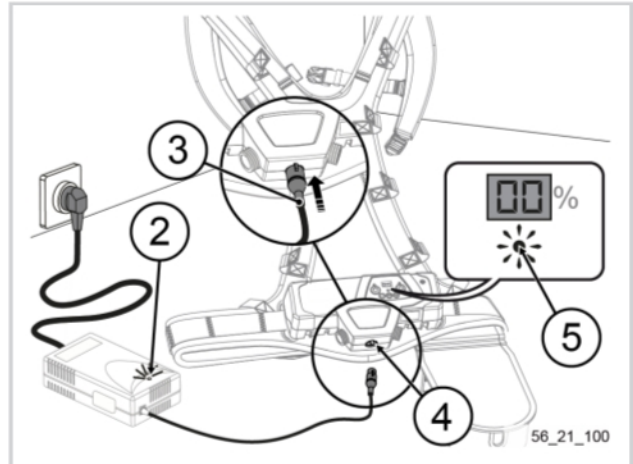
When the battery is discharged, the tool stops automatically. The gauge display goes off, and the buzzer beeps once. See Section 7.1, "Recap of battery display messages and audible signals"

- Make sure that the battery is switched off, see Section 4.2, "Switching the battery on and off".
- Install the charger and battery in an ventilated, dry place with a temperature between 10°C and 25°C and free from dust. Place the battery lying in a horizontal position.
- Connect the charger power connector (1) to the power outlet. The charger indicator (2) lights up red.



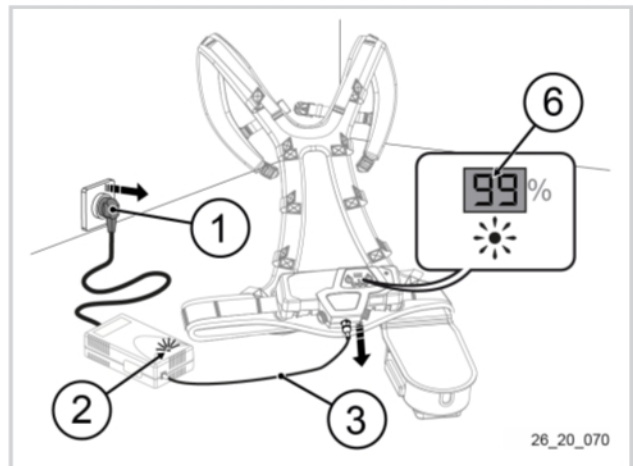
26_20_068

4. Align the markers on the charging cable with the slot on the battery charging connector.
5. Connect the charging cable (3) to the charging connector (4) of the battery. The charger indicator (2) lights up flashing green, and the battery indicator (5) flashes orange.



6. When the gauge display (6) flashes, the battery is charging. The charging is finished when the message 99 appears on the gauge display (6) and the charger LED (2) is solid green.

Once the battery is charged, first disconnect the charging cord (3) from the battery and then the mains plug from the charger (1).



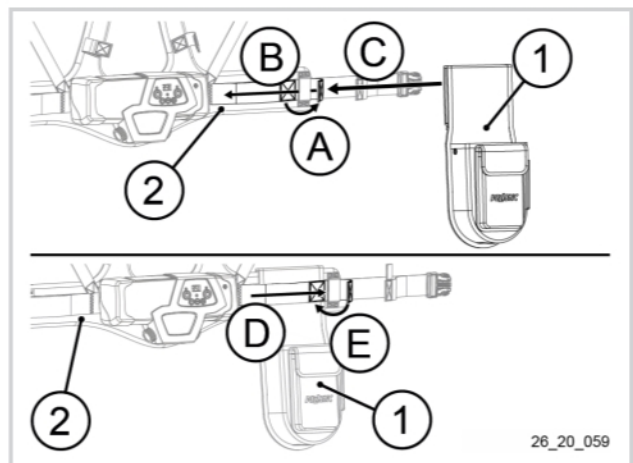
Note

After a long storage period (new battery, winter storage etc.), when you disconnect the charger, the charge level indicator may display a value of less than 99%. This is a normal phenomenon which can reoccur for up to 5 charge cycles with normal use between each charge.

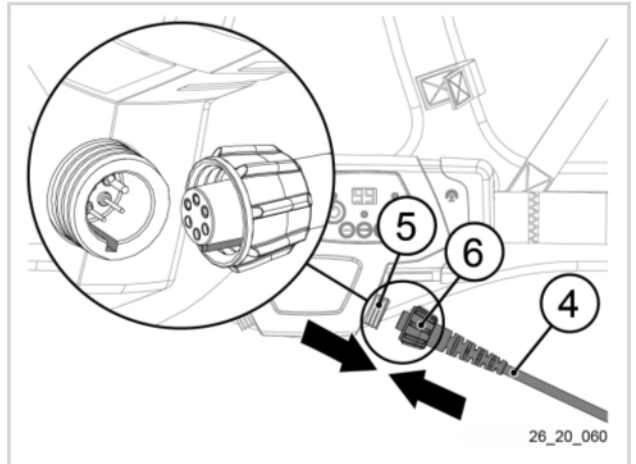
4.5. FITTING THE HOLSTER TO THE HARNESS

NOTE: The procedure is the same for right and left hand holstering. Only illustrations of the right side set-up are shown.

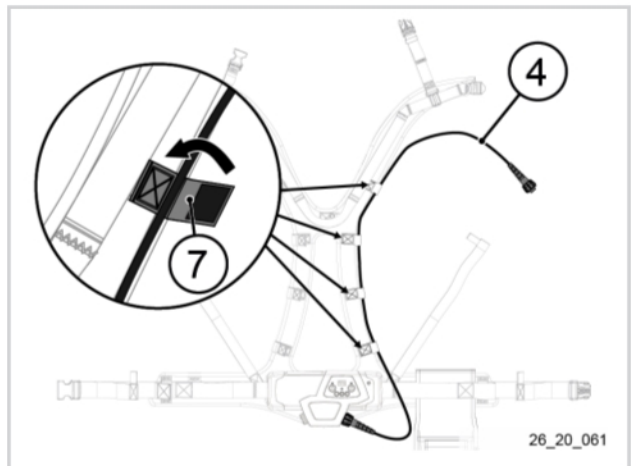
1. Detach the hook and loop strap (1).
2. Pull the hook and loop strap (1) out of the belt loop (2).
3. Install the holster (3) on the harness.
4. Position the hook and loop strap (1) on the holster (3).
5. Slide the end of the hook and loop strap (1) into the belt loop (2).
6. Pull and fasten the hook and loop strap (1).



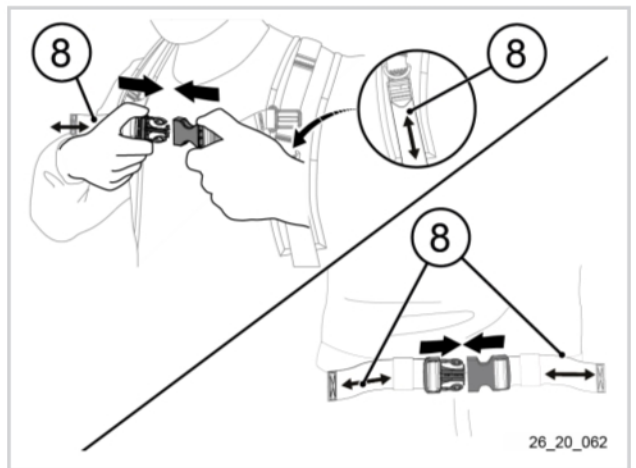
7. Align the tool power cord marker (4) with the slot in the right-hand connector (5) of the battery.
8. Connect the tool power cord (4) to the battery on the right connector (5) of the battery.
9. Tighten the tightening ring (6) of the tool power cord.



10. Fit the tool power cord (4) in the slots (7) of the harness.



11. Put on the harness and adjust with the straps (8).
12. Attach the power cord to your arm using the arm-band provided, see Section 4.7, "Putting the lead and wrist strap in place".



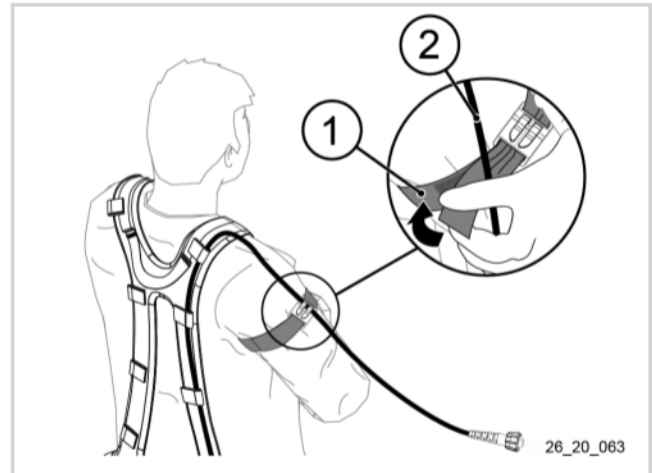
4.6. TOOL CONNECTION

Note

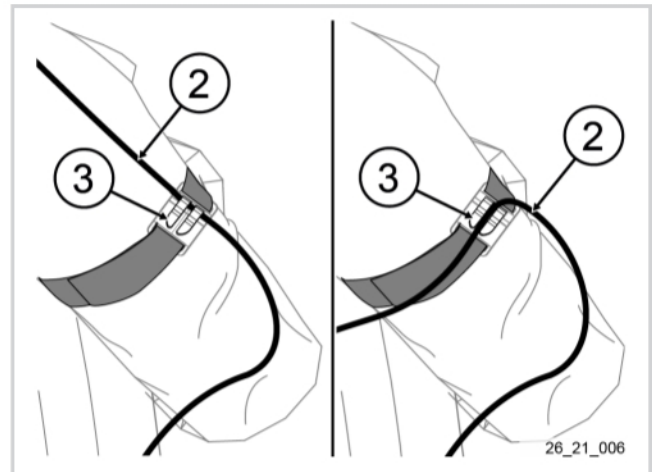
For more information on connecting the tool to the battery, refer to the tool's operating instructions manual.

4.7. PUTTING THE LEAD AND WRIST STRAP IN PLACE

1. Put on the harness and install the connected tool in the holster, see Section 4.5, "Fitting the holster to the harness" and Section 4.6, "Tool connection".
2. Put the armband (1) around your arm.



3. Insert the tool power cord (2):
 - in parallel if it is to slide into the armband clip (3);
 - perpendicularly if it is to be attached in the armband clip (3).
4. Connect the tool power cord (2) to the tool, see Section 4.6, "Tool connection".
5. Put the tool in the holster.



5. USING THE TOOL

Note

For more information on the modes of use and "functional" settings, please refer to the tool operating instructions.

5.1. USAGE METHOD WITH BOTH TOOLS

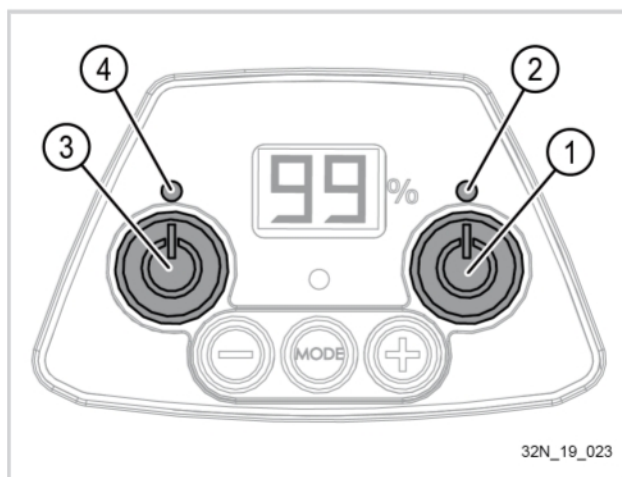
In order to guarantee your safety, when the pruning shears and the 1.2 kW tool are connected, the pruning shears take priority:

- When the pruning shears are operating, the 1.2 kW tool is not powered
- When the pruning shears are in standby, the 1.2 kW tool is powered

So there is no need to use the ON/OFF switches to start and stop the tools.

Left side: For 1.2 kW tools only.

Right side: For pruning shears only.



- To start your pruning shears PELLENC, switch on the battery by pressing the ON/OFF button (1) for 1 second, the red LED (2) lights up, then the battery emits 4 beeps. The pruning shear is ready for use, refer to the instruction manual of the pruning shear for more information about powering it on.
- To stop your pruning shears, close the blade, using the trigger, and keeping it closed, press on the switch (1). The battery beeps once and the red LED (2) goes off.
- The pruning shears stop closing if the cut required is too hard. They can then only open.
- To put the pruning shears into "standby" mode, press and hold the trigger until the blade closes and the battery beeps.

Note

For more information on setting the trigger hold time for standby, see the tool's instruction manual.

- After two minutes without trigger action, the tool will automatically go into standby mode, press the trigger again to exit the standby mode.
- To start your 1.2 kW tool, switch on the battery by pressing the ON/OFF button (3) for 1 second, the green LED (4) will light up and flash. Ensure that the pruning shears are in standby mode, the green LED (4) remains on and steady. The 1.2 kW tool is ready for use.

Note

If the pruning shears is set to never go into standby mode, turn off the pruning shears by pressing the ON/OFF button (1) before pressing the ON/OFF button (3) for 1.2 kW tools.

Important

If there is no connector connected, it is imperative to put the protective cap on (otherwise there will be electrical malfunctions).

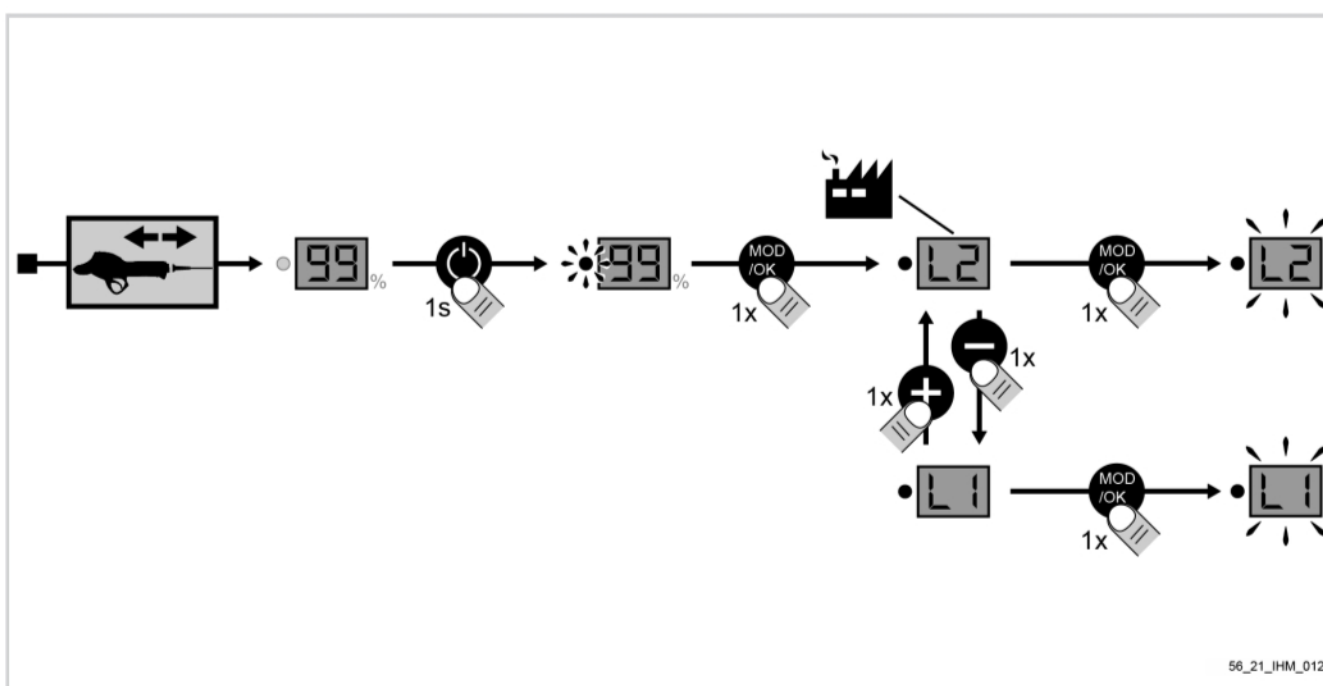


Warning

Before using the 1.2 kW tool, read the relevant instruction manual carefully.

5.2. AUTHORISATION MODES

5.2.1. CHANGE OF AUTHORISATION MODE



1. Disconnect the tool and turn on the battery,
2. Press the "mode" button,
3. Select the mode by pressing + or -,
4. Press the "mode" button to confirm,
5. After setting the mode, turn off the battery and then reconnect the tool.

PELLENC

   www.pellenc.com

PELLENC
Quartier Notre Dame - 84120 Pertuis (France)