

**SAMSUNG**

Smart Home  
**EZON**

# 6" Video Door Phone System with Door Camera



**How to live  
with security**



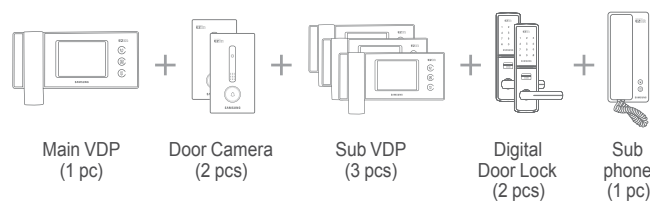
SHT-3006XM

**SAMSUNG EZON** Smart Home System  
The most suitable security system  
for your place.

## SHT-3006XM

### FEATURES

- Superior 6" color TFT LCD screen
- Enhanced security access control : call to the suite of your selection by using the main entrance camera phone (Main entrance door camera phone : SHT-5088XL)
- Scalability:  
one(1) Video Door Phone(VDP) can be inter-operated with up to two(2) door cameras, three(3) additional VDPs, two(2) digital door locks and one(1) sub-phone



### FUNCTION

- Real-time video monitoring in each door camera
- In-house call among VDPs and sub phone
- Brightness and volume control with OSD menu
- Various model of cameras can be connectable (SHT-CP611E / CN610 / CN620 / CN640)



Call to Sub units

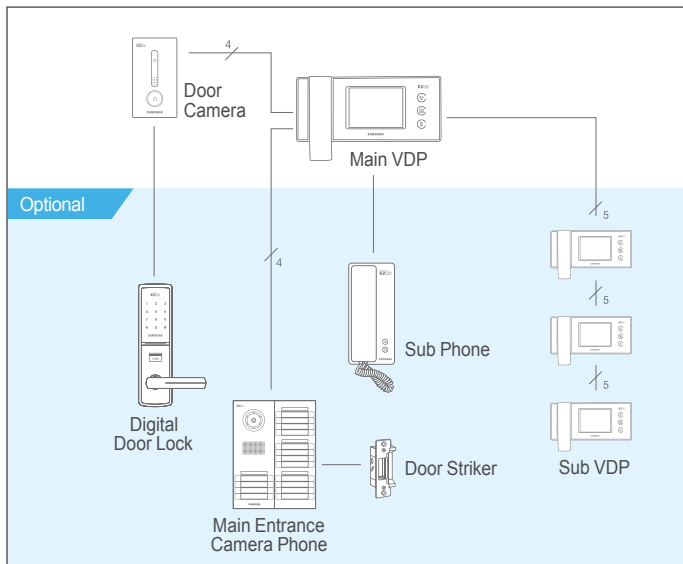


Talk to Door



Door Open


### SYSTEM CONFIGURATION



### PRODUCT COMPONENTS

Description	Model Code
Main VDP	SHT-3006XM
Door Camera Phone	SHT-CP611E / CN610 / CN620 / CN640
Sub Phone	SHT-IPE101
Main Entrance Camera Phone	SHT-5088XL

### SPECIFICATIONS

 SHT-3006XM -H	Contents	Description
	Power	DC12V Included Adaptor
	Power Consumption	7W
	Display	6" Wide Color TFT LCD
	Color	Crystal Black, Snow White
	Dimension	278x130x37mm (WxHxD)
	Weight	1.05kg
	Installation	Wall Mounting
	Type	Handset

SHT-CP611

Contents	Description
Power	DC 12V / 330mA (max)
Lens	1/3" Color (320K Pixel)
Video Signal	NTSC
Power Consumption	230mA
Dimension	2.9x5.2x0.4Inch (WxHxD)
Installation	Flush Mounting
IP Rate	IP 43
Type	Hands-free Type
Weight	180g

Authorized **SAMSUNG EZON** Distributor.

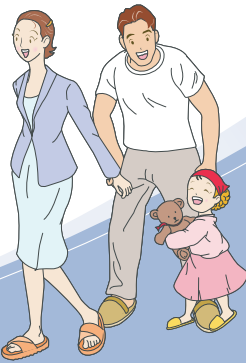
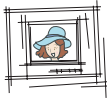
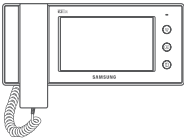


**Toll Free: 1-855-432-2886**

www.hdcctvonline.com

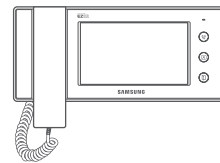
# User Guide

SHT-3006BM




# User Guide

SHT-3006BM



- English
- русский язык
- Türkiye
- Español
- Deutsch
- Italiano
- Português



This marking shown on the product or its literature, indicates that it should not be disposed with other household wastes at the end of its working life. To prevent possible harm to the environment or human health from uncontrolled waste disposal, please separate this from other types of wastes and recycle it responsibly to promote the sustainable reuse of material resources.

Household users should contact either the retailer where they purchased this product, or their local government office, for details of where and how they can take this item for environmentally safe recycling.

Business users should contact their supplier and check the terms and conditions of the purchase contract.

This product should not be mixed with other commercial wastes for disposal.

Table of Contents

**Before You Read**

• **Precaution** ..... 3

• Safety Precautions

**Chapter 1 - Preparation**

**Parts and Functions** ..... 9

• Video door phone ..... 9

• Interphone (option) ..... 13

**Chapter 2 - How to Use**

**Call Function**

• If a visitor comes to the front door and rings the bell ..... 15

• Monitoring the outside ..... 17

• Turning off the alarm sound ..... 17

• Turning off the alarm sound if the door camera is stolen ..... 17

• Talking with inter(sub) phone ..... 19

• To call the security officer ..... 23

• When the security officer calls you ..... 23

**User Setup Functions**

• Selecting user setup mode ..... 25

• Selecting melody ..... 25

• Adjusting melody volume ..... 27

• Adjusting the talk volume/Screen ..... 27

**Chapter3 - Installation**

**Installation**

• Video door phone ..... 29

• Door camera ..... 31

**Wiring**

• When connecting video door phone + 3 sub phones

• door camera + lobby phone + interphone ..... 33

• Setting up ..... 35

• Specification of connection cables ..... 37

**Chapter4 - Useful Information**

**Product Composition**

• Video door phone ..... 39

• Interphone ..... 39

• Door camera ..... 39

**Troubleshooting**

• Frequently asked questions ..... 41

**Product Specifications**

• Video door phone ..... 43

• Interphone ..... 45

• Door camera ..... 45

**Product Specifications**

• Product Warranty ..... 47

**Safety Precautions**

\* Please first read the below to ensure the proper use of this product.

► **Safety Precautions**

**⚠ WARNING**

If instructions are not followed, this could result in serious injury or possible fatality to the user



- 1** Do not install or disassemble on your own.

  - If the correct procedure is not followed, this could result in a malfunction, electric shock, or fire.
- 2** Avoid the product from contact with other products that could emit heat, water, and humidity.

  - This may result in a fire or malfunction.
- 3** Do not strike the product with hard objects.

  - The product may break or cause an electric shock or fire.
- 4** Do not allow liquid to enter the inside of the product.

  - There are dangers of electric shock or fire.

Safety Precautions

\* Please first read the below to ensure the proper use of this product.

► Safety Precautions

 WARNING

If instructions are not followed, this could result in serious injury or possible fatality to the user



**5** If there is an unusual smell, sound, or smoke coming from the product, turn off the power switch at the main electric switchboard and immediately contact the retailer.

- This could result in electric shock or fire.

**6** Be careful not to splash water while cleaning the front door.

- This could result in electric shock or fire.

**7** Do not press button with sharp objects, and do not insert objects through the hole.

- This could result in electric shock or fire.

**8** Do not use a wet towel, flammable alcohol, benzene or thinners to clean the product.

- This could result in electric shock or fire.


■ After a service, ensure that the service personnel performs a safety check-up.



Safety Precautions

\* Please first read the below to ensure the proper use of this product.

► Safety Precautions

 Call the customer support center if you require assistance.

If instructions are not followed, this could result in injury to the user, or potential damage to property.



**1 Do not hold onto the product or attempt to pull it out.**  
- Do not allow a child to hang onto the product. The child may get hurt if the product falls down.



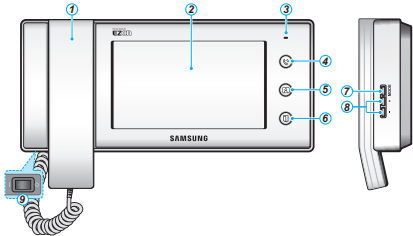
**2 Be careful while standing from below the product.**  
- It may cause an injury if one's head knocks the product.



**3 Ensure any new operators read this manual prior to use.**  
- It is important that all new operators read this manual immediately.

Parts and Functions

► Video door phone



- ① Handset
- ② LCD Screen
- ③ POWER display lamp  
When the power supply is normal.
- ④ INTERPHONE[] button/display lamp  
Used to call the interphone(optional).
- ⑤ CALL[] button/display lamp  
Used to view outside or you can call the security officer by lifting the handset and pressing this button.
- ⑥ OPEN[] button  
Used to open the door while talking into the handset.
- ⑦ MODE button  
Used to change setups.  
(Ring tone, volume, brightness, default)

- ⑧ +/- button  
Used to adjust the volume and brightness.
- ⑨ POWER button  
Used to turn the power on or off.

Reference

- **Adjusting bell volume**  
From the bell ringing mode, press the **MODE** button and adjust with +/- button.
- **Adjusting the talk volume**  
During the front door calling mode, press **MODE** button and use +/- button to adjust the options.
- **Adjusting brightness**  
While monitoring outside, press the **MODE** button and press +/- button to adjust brightness.

※ The sample color may vary from that of the photo image.

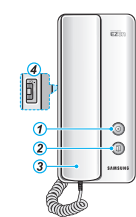
*Deutsch*

*Italiano*

*Português*

Parts and Functions

► Interphone (option)

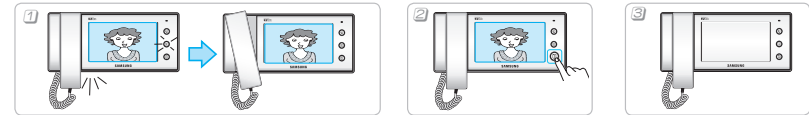


- ① **CALL** button  
Used to call the video door phone.
- ② **OPEN** button  
Used to open the door while talking on the handset.
- ③ **Handset**
- ④ **VOLUME (VOL)** control  
Move the control switch to adjust the volume.

### Call Function

It is used to talk with the visitor or to open the door.

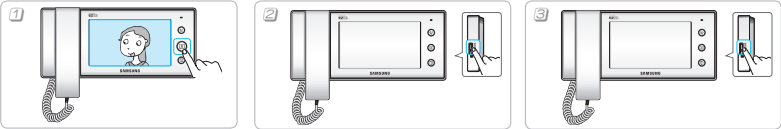
► **If a visitor comes to the front door and rings the bell.**



- 1 The bell rings and the screen displays the visitor.
- ✖ The bell will ring from the interphone (option).
  - ✖ The bell rings and the CALL lamp blinks.
- To talk with the visitor, pick up the handset and put it to your ear.
- ✖ You can call talk by picking up the handset from the interphone.
  - ✖ Screen will turn off automatically after about 30 seconds if the handset is not hung up.
  - ✖ Maximum length of the front door call is 3 minutes, and maximum length of joint front door call is 1 minute.
- 2 While talking, open the front door by pressing the OPEN button.
- ✖ Door can be opened by pressing the OPEN button while talking over the handset from the interphone (option).
- 3 Hang up the handset to end the call.
- ✖ To end the call, you can put down the handset from the interphone (option).

- Reference**
- ✖ If the door lock system designed by our company is installed at the front door or joint front door, the door can be opened by pressing the OPEN button while you are talking on the handset.
  - ✖ To adjust the volume while calling, press the MODE button and use +/- button to control.

Call Function

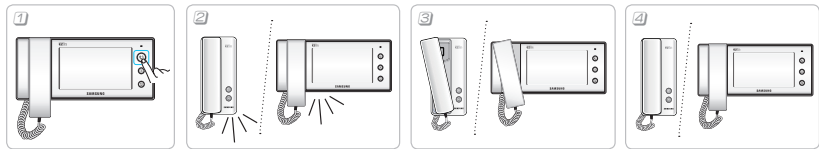


- **Monitoring the outside**
- 1 Outside screen view will appear when you press the **CALL** button from the stand-by screen.
- ⌘ The view outside of the front door will turn off after approximately 30 seconds.
- **Turning off the alarm sound**
- 2 When the outside emergency detector is activated, the alarm will sound and will be reported to the security office.
- To stop the alarm, press and hold the **MODE** button for more than 2 seconds.
- ⌘ This function is available only when the outside emergency detector is installed.
- **Turning off the alarm sound if the door camera is stolen**
- 3 When the door camera is deviated or detached from the normal position, a warning bell is sounded.
- To stop the alarm sound, press and hold the **MODE** button for more than 2 seconds.
- ⌘ This function is available only when SHF-CW610E has a tamper switch installed.

Call Function

► Talking with Intert(sub) phone

To call inter(sub) phone from the video door phone



- 1 While holding the handset, press the **INTERPHONE** button.
- ⌘ The bell rings and the INTERPHONE lamp blinks.
- 2 Video door phone call melody rings at the inter(sub) phone.
- 3 You can talk by lifting the inter(sub) phone's handset.
- 4 Put down Inter(sub) phone 's handset to end the call.

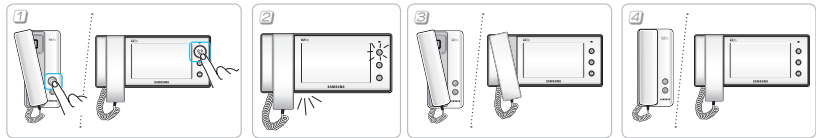
**Reference**

- The interphone call will end automatically after about 30 seconds if someone does not answer.
- Maximum length of the interphone call is 3 minutes.

Call Function

► Talking with inter(sub) phone

To call the video door phone from inter(sub) phone



- 1 While holding the handset, press the **CALL** button on the interphone or press the extension button on the sub phone.
- 2 Interphone call melody rings at the video door phone.  
⌘ The bell rings and **INTERPHONE** lamp blinks.
- 3 You can talk by picking up the video door phone's handset.
- 4 Put down inter(sub) phone's handset to end the call.

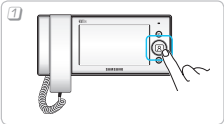
**Reference**

- The interphone call will end automatically after about 30 seconds if someone does not answer.
- Maximum length of the interphone call is 3 minutes.

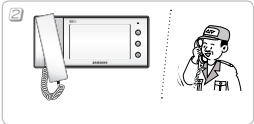
### Call Function

You can call the security officer or inter(sub) phone

► To call the security officer

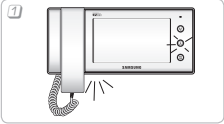


- 1 While holding the handset, press the **CALL** button.
- ✧ Call bell rings from the handset.

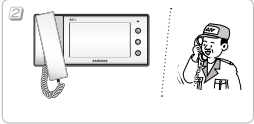


- 2 Talk when the security officer replies.
- ✧ Put down the handset to end the conversation.

► When the security officer calls you



- 1 The bell rings for an incoming security call.
- ✧ The bell rings.



- 2 Pick up the handset to talk.
- ✧ Hang up the handset to end the conversation.

User Setup Functions



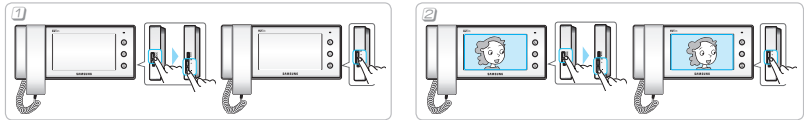
► Selecting user setup mode

- 1 From the stand-by screen, press the **MODE** button to select the option menu you want.
- ⌘ To end user setup mode, press the **MODE** button, select **EXIT**, then press the **MODE** button again or wait for 10 seconds for the automatic shut-down.
- ⌘ While calling or viewing the video door phone, press **MODE** button, select Call Volume, Color, Contrast, or Bright, and use **+**/**-** button to adjust.

► Selecting melody

Select and set up melodies for the door camera, the lobby phone, the security phone or the inter(du) phone.

- 2 From the stand-by screen, press the **MODE** button, go to the **CAMERA / INTERPHONE / GUARD & LOBBY MELODY SELECTOR**, and select melody using **+** or **-** buttons.
- **Selectable melodies**  
1-3 : Ding-dong 1-3  
4-6 : Melody 1-6
- To save the changes, press the **MODE** button.
- ⌘ The same melody can be selected for more than one function. Namely the **CAMERA**, **GUARD & LOBBY**, and **INTERPHONE**.
- ⌘ To end the user setup mode, press the **MODE** button, select **EXIT**, then press the **MODE** button again or wait for 10 seconds for the automatic shut-down.



► Adjusting melody volume

- 1 From the stand-by screen, press the **MODE** button, go to **MELODY VOLUME**, and press +/- button to adjust the volume.
- Volume increase

• Volume decrease
- To save the changes, press the **MODE** button.
- ⌘ To end user option mode, press the **MODE** button, select **EXIT**, then press the **MODE** button again or wait for 10 seconds for the automatic shut-down.

► Adjusting the talk volume/Screen

- 2 Either at the calling screen or while the video door phone is displaying, press the **MODE** button and select the setup option you want, and press +/- button to adjust the setting.
- Talk volume Mode  
Talk Volume

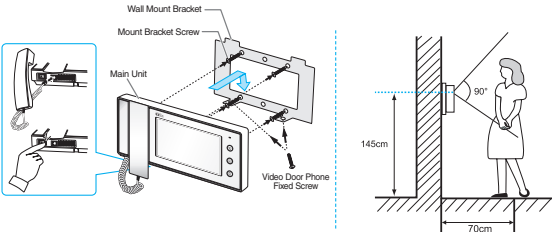
• Screen adjust mode  
Brightness  
Contrast  
Color
- To save the changes, press the **MODE** button.

**Reference**

- Melody and talk volume have 4 levels, and default level is 3.

Installation

► **Video door phone**  
Product installation Diagram

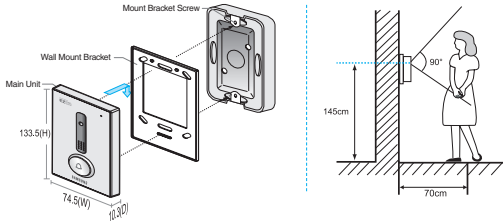


- How to install**
1. Select the area where you want to install the product.  
(Height would be 145cm high from the bottom to the center of LCD monitor)
  2. Hold the wall mount bracket with the 4 screws to ensure the fixture is in the desired position.
  3. Connect Door camera, lobby phone (including the connection to the security office) and interphone (option) cables to the video door phone.
  4. Place the video door phone on the bracket, and use the screw to ensure the fixture is in place.
  5. Turn on the power switch at the bottom of the product to see ensure the power is on.



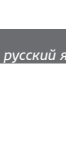
Installation

► Door camera  
Camera installation diagram



- How to install**
1. Select the area where you want to install the product.  
(Height would be 145cm high from the bottom to the center of LCD monitor.)
  2. Hold the wall mount bracket with the 4 screws to ensure the fixture is in the desired position.
  3. Connect the connection cord with the video door phone to the door camera's terminal.
  4. Check if it communicates with the video door phone.

- Precautions while installing**
1. Avoid areas where direct sunlight, water, dangerous chemicals, or high-voltage cords, which can access the unit.
  2. Avoid areas with extremely high or low temperatures.

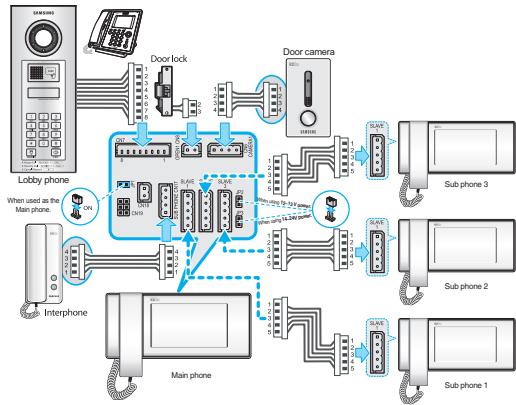


- English
- русский язык
- Türkiye
- Español
- Deutsch
- Italiano
- Português

Wiring

\* For the safety and the correct installation, please follow the instructions.

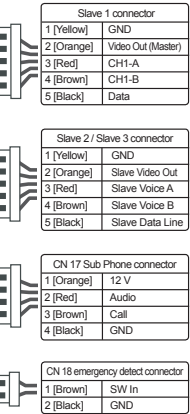
- **When connecting video door phone**  
+ 3 sub phones + door camera  
+ lobby phone + interphone





Wiring

► Specification of connection cables



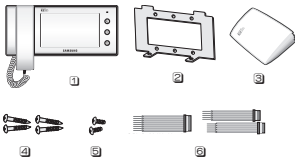
Reference

- Do not connect AC power. It may cause an electric shock or fire.

Product Composition

This is the product composition. Before you begin, please make sure that you have all parts listed below.

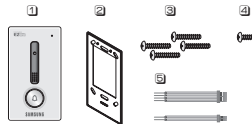
► Video door phone



► Interphone (SHT-IP210: Option)



► Door camera (SHT-CP611E: Option)



► Video door phone

- 1 Video door phone(SHT-3006BM) : 1 piece
- 2 Video door phone Bracket : 1 piece
- 3 User Manual : 1 piece
- 4 Mount Bracket Screw : 4 pieces
- 5 Video door phone fixed Screw : 2 pieces
- 6 8-pin cable for Lobby phone with Guide Station : 1 piece / 4-pin cable for sub phone EXT Harness : 2 pieces

► Interphone (SHT-IP210: Option)

- 1 Interphone : 1 piece
- 2 Mount Bracket : 1 piece
- 3 Mount Bracket Screw : 2 pieces
- 4 4-pin cable : 1 piece

► Door camera (SHT-CP611E: Option)

- 1 Door camera : 1 piece
- 2 Mount Bracket : 1 piece
- 3 Mount Bracket Screw : 4 pieces
- 4 Door camera fixed Screw : 1 piece
- 5 4-pin cable for Door camera : 1piece / 2-pin cable for Camera Door Lock (only for SHT-CP611EEN model) : 1 piece

Troubleshooting

» Frequently asked questions

The power is not turning on.

- Check if the power cable is connected.

The screen is too dark.

- Check the lights around the cameras installed outside.
- Clean up the camera installed outside.
- Adjust the brightness on the function setup (Refer to page 27)
- Out of 4 levels, level 3 is the default, and as the level increases, the screen gets brighter.

Noise is too loud when I talk.

- Check if the audio line among the door phone lines is short circuited.

I cannot hear my guest's voice properly.

- Check the volume status.
- Check the wire connection between the video door phone and the door camera.

Product Specifications

> Video door phone

◆ SHT-3006 BM

Device	Categories	Specifications
SHT-3006BM	Input Power	Provided by the distributor installed between floors.
	Maximum Power Consumption	10 W
	DC Input Voltage	12V~24V
	Call Method	Handset call type.
	Size of the Monitor Screen	6 inches
	LCD Resolution (Resolution: dot)	480(horizontal) X 234(Vertical)
	LCD Screen View Angle	Horizontal angle ±50° Vertical angle ±50°/±30°
	LCD Backlight Lifespan	10,000 hrs (when used in ±25°)
	Method of Transmitting Video Signal	US : NTSC(Composite) / EN : PAL(Composite)
	Video Cable Wiring	2-line wiring
	Camera Range	Diameter: 0.65mm / Suggested Range: within 30m
	Door Phone Ring Tone	Refer to page 25.
	Weight (main body)	0.86 Kg/1.9 lb
	Size (Width X Height X Depth)	278.0 mm x 193.0 mm x 37.0 mm 10.9 inch x 7.6 inch x 1.5 inch

Product Specifications

► Interphone

◆ SHT-JPE101

Device	Categories	Specifications
SHT-JPE100 SHT-JPE101	Communication Mode	Handset Communication
	Chime Melody	Provided by the monitor
	Main Unit Electricity Consumption	Max. 150 mA
	Weight	SHT-JPE100 : 440 g (0.97 lb) SHT-JPE101 : 530 g (1.1 lb)
	Dimension (W x H x D)	SHT-JPE100 : 66 mm x 217.5 mm x 39.8 mm (3.3 inch x 8.6 inch x 2.4 inch) SHT-JPE101 : 86.5 mm x 214 mm x 34.8 mm (3.3 inch x 8.4 inch x 2.2 inch)

► Door camera

◆ SHT-CP611E

Device	Categories	Specifications
SHT-CP611E	Input Power	DC 12 V (Provided by the monitor)
	Injection Method of Video Signal	US : NTSC (Composite) / CN : PAL (Composite)
	Size (Width x Height x Depth)	74.5 mm x 135.5 mm x 10.4 mm (2.9 inch x 5.4 inch x 0.4 inch) Mount Bracket included
	Weight	180g (0.4lb)

- English
- русский язык
- Türkiye
- Español
- Deutsch
- Italiano
- Portugués

**Product Warranty**  
► **Product Warranty**

Seoul Comtech Products are supplied with one(1) year warranty base from the date of purchase. we'll repair or replace the defective product with a new or factory rebuilt replacement.

Subject of Warranty

1. This warranty applies to the original purchase only.
2. All warranty will be invalid if unauthorized repair or modifications are made to the unit or in any case of accident, misuse, damage caused by improper installation and altered serial numbers.
3. If you need a warranty service, you should consult with the customer support center or the dealer office. The product in all cases must be accompanied by the following items; customer name, address, telephone number, the serial numbers, copy of customer sales receipt showing the purchase date and place.

The model number is on the box and front of the manual. The serial number is on the unit. Record the model and serial numbers in the spaces provided below. Refer to these numbers for warranty service.

Model No. \_\_\_\_\_

Serial No. \_\_\_\_\_