

THE TELESIS GUIDE

A comprehensive overview of
products and services from
the permanent marking and
traceability experts.

LASER MARKING SYSTEMS

PINSTAMP® DOT PEEN

TELESCRIBE® MARKING SYSTEMS

CUSTOM ENGINEERED SOLUTIONS



TELESIS IS DIFFERENT



THE PIONEERS

As Telesis PINSTAMP® systems remain **the gold standard** in dot peen marking, our team consistently brings game-changing products to market. Our Fiber laser markers introduced new technology to permanent marking and together with our Infrared, Green, UV, and CO2 markers continually push the boundaries of industrial marking. Forward-thinking Telesis-developed vision systems **create catalysts for industrial automation.**



RUGGED & RELIABLE

Telesis equipment is **built to last**. We engineer our laser marking systems and dot peen markers with **high-quality, robust materials** that stand up to the challenges of tough environments. Highest quality laser sources, powder-coated metals, damage-proof screens, and sturdy materials are just some of the reasons our customers experience **fewer problems, less down time, and greater production efficiency.**



THE WIDEST ARRAY

Whether you need an off-the-shelf bench-top PINSTAMP® marker or want a custom engineered integrated laser system, **Telesis has the product lineup, the know-how, and specialized service offerings** to make it happen. Also, running all your marking equipment with the same great proprietary MERLIN® software **requires less employee training and more cross-functionality** in your operations.



ONE-STOP SHOP

Ditch the confused and fragmented individual service providers and **let us take care of everything.** From equipment, to software, to customization and integration, we'll design an fully support all aspects of a **turnkey solution that meets your unique needs.** Ongoing maintenance programs and on-call service will ensure your investment is **long lasting and always efficient.**



THE BEST PEOPLE

We take our customers seriously. Team Telesis is united by the mission of delivering the ultimate experience at every step of our customers' journeys. Whether you are working with the expert sales team, talking to our network of strategic partners, chatting with our customer service team, or designing a custom solution with our engineers, **you will be wowed by the dedication and knowledge** we possess.



PINSTAMP® Dot Peen Markers

PINSTAMP® Marker Overview

Page **34**

Popular PINSTAMP® Markers

Page **39**

PINSTAMP® Controllers

Page **46**

Telescribe® Marking Systems Overview

Page **47**

PINSTAMP® Details

Page **48**

"What separates Telesis from the others is the way they believe in and stand behind their products. Telesis delivers."

- Jermey Tincher, Smith & Nephew

PINSTAMP® Dot Peen Overview

SINGLE-PIN DOT PEEN MARKERS							MULTI-PIN DOT PEEN MARKERS		PORTABLE DOT PEEN MARKERS		
	TMP1700	TMP2100	TMP3200	TMP4210	TMP4750	TMP6100	TMM4200	TMM4250	TMP4500E	Nomad 2000	Nomad 4000
											
Features	This proven industrial workhorse is an industry staple and continues to impress.	The TMP2100 provides great functionality fit into a smaller footprint.	A generously sized marking window sets this dot peen marker apart from the rest.	The TMP4210 is an incredibly lightweight and compact hand-held marker.	This lightweight hand-held marker delivers remarkable power and depth.	The robotic design delivers precise marks and makes part placement easy.	A unique, compact ergonomic multi-pin marker is incredibly fast.	Ideal for online applications in wet, dirty manufacturing environments.	A powerful piece of hand-held equipment, this marker eliminates the need for air.	The Nomad is a fully portable, rechargeable, battery-powered system.	The Nomad is a fully portable, rechargeable, with more power than the 2000.
What it's Good For	Field-Proven Design Highly Functional Unparalleled Reliability	Fast Marking Small Characters Compact Envelope	Fast Marking For Constrained Space Robust Construction	For High Production Space Constraints Easy to Use	VIN Marking Extra-Deep Marking Dark Spaces	Large Applications Cylindrical Marking Medical Applications	Constrained Space Comfortable Grip Makes Quick Marks	Wet Environments Fixtured Applications For Constrained Space	Does Not Require Air Makes Deep Marks Easy to Hold	Rechargeable Battery Can Go Anywhere Does Not Require Air	Makes Deep Marks Can Go Anywhere Does Not Require Air
Marking Window (in)	1.50 in x 2.50 in	0.79 in x 1.96 in	4.0 in x 6.0 in	0.5 in x 2.0 in	1.57 in x 5.5 in	6.0 in x 12.0 in	0.5 in x 2.0 in	0.5 in x 2.0 in	1.0 in x 4.0 in	1.0 in x 4.0 in	1.0 in x 4.0 in
Marking Window (mm)	38 mm x 63 mm	20 mm x 50 mm	100 mm x 150 mm	13 mm x 51 mm	40 mm x 140 mm	152 mm x 305 mm	12.7 mm x 50.8 mm	12.5 mm x 60.8 mm	25.4 mm x 101.6 mm	25.4 mm x 101.6 mm	25.4 mm x 101.6 mm
Max Marking Speed	4 characters / second	6 characters / second	4 characters / second	8 characters / second	Varies	Varies	8 Characters / second	8 Characters / second	4 characters / second	5 characters / second	4 characters / second
Marking Depth (in)	0.003 - 0.013 in	0.001 - 0.013 in	0.003 - 0.013 in	0.001 - 0.013 in	0.001 - 0.018 in	Varies	0.001 - 0.013 in	0.001 - 0.013 in	0.001 - 0.018 in	0.001 - 0.010 in	0.001 - 0.018 in
Marking Depth (mm)	0.076 - 0.305 mm	0.03 - 0.33 mm	0.03 - 0.33 mm	0.03 - 0.33 mm	0.03 - 0.45 mm	Varies	0.03 - 0.33 mm	0.03 - 0.33 mm	0.03 - 0.46 mm	0.03 - 0.25 mm	0.03 - 0.46 mm
Max Character Height (in)	1.5 in	0.79 in	4.0 in	0.5 in	5.5 in	6 in	0.5 in	0.5 in	1.0 in	1.0 in	1.0 in
Max Character Height (mm)	38 mm	20 mm	101.6 mm	12.7 mm	140 mm	152.4 mm	12.7 mm	12.7 mm	25.4 mm	25.4 mm	25.4 mm
Max Resolution	200 dpi	200 dpi	200 dpi	200 dpi	200 dpi	200 dpi	200 dpi	200 dpi	80 dpi	80 dpi	80 dpi
Logo Marking Capable	Yes	Yes	Yes	Yes	Yes	Yes	Yes	Yes	Yes	Yes	Yes
2D Code Marking Capable	Yes	Yes	Yes	Yes	Yes	Yes	Yes	Yes	Yes	Yes	Yes
Radial Marking Capable	Yes	Yes	Yes	No	No	Yes	No	Yes	No	No	No
Programmable Z-Axis	Yes	Yes	Yes	Yes	No	Yes	No	No	No	No	No
Floating Pin Technology	Yes	Yes	Yes	Yes	Yes	Yes	Yes	Yes	No	No	No
Maximum Number of Pins	1	1	1	1	1	1	4	4	1	1	1
Mounting	Fixtured Standard Handheld Optional	Fixtured Standard Handheld Optional	Fixtured Standard Handheld Optional	Handheld Standard Fixtured Optional	Handheld Standard Fixtured Optional	Fixtured Standard	Handheld Standard	Handheld Standard	Handheld Standard	Handheld Standard	Handheld Standard
Available in Electronic	Yes	No	Yes	No	No	No	No	No	Electric Only	Electric Only	Electric Only
Controllers Available	Fixed Button (TMC470) Touch Screen (TMC520) Merlin III w/ PC	Fixed Button (TMC470) Merlin III w/ PC	Fixed Button (TMC470) Merlin III w/ PC	Fixed Button (TMC470) Merlin III w/ PC	Fixed Button (TMC470) Touch Screen (TMC520) Merlin III w/ PC	Fixed Button (TMC470) Merlin III w/ PC	Fixed Button (TMC470) Merlin III w/ PC	Fixed Button (TMC470) Merlin III w/ PC	Fixed Button (TMC470) Merlin III w/ PC	Nomad Controller	Nomad Controller

ENTRY LEVEL DOT PEEN MARKERS



An entry-level system with extruded aluminum marking head mounting post and base	An entry-level machine good for bench-top applications and stand-alone marking.	An entry-level fully programmable machine great for portable marking.
Smaller Budgets Does Not Require Air Great Value	Smaller Budgets Does Not Require Air Great Value	Smaller Budgets Does Not Require Air Great Value
4.0 in x 4.0 in 101.6 mm x 101.6 mm 5 characters / second 0.001 - 0.010 in 0.03 - 0.25 mm 1.0 in 25.4 mm 80 dpi	4.0 in x 6.0 in 101.6 mm x 152.4 mm 5 characters / second 0.001 - 0.018 in 0.03 - 0.46 mm 4.0 in 101.6 mm 80 dpi	1.0 in x 4.0 in 25.4 mm x 101.6 mm 5 characters / second 0.001 - 0.010 in 0.03 - 0.25 mm 1.0 in 25.4 mm 80 dpi
Yes Yes No No	Yes Yes Yes No	Yes Yes No No
No 1 Hand-Held Standard	No 1 Fixed-Mount Standard	No 1 Hand-Held Standard
Electric Only Fixed-Button (BM470) Touch Screen (TMC520) Merlin III w/ PC	Electric Only Fixed-Button (BM470) Touch Screen (TMC520) Merlin III w/ PC	Electric Only Fixed-Button (BM470) Touch Screen (TMC520) Merlin III w/ PC

Speed >>

Depth >>

Flexibility >>

Meeting Every Challenge

THE WORLD'S
FASTEST
DOT PEEN
MARKER

16 characters
per second



Unique to Telesis, our PINSTAMP® dot peen markers **have multiple pins to complete marks more quickly.** From 2 pins to 8 pins, we have a solution that meets your needs. The TMM5400, with 8 pins, is the world's fastest marker. The TMM5100 is also a versatile options for speed.

MULTI-
STRIKE

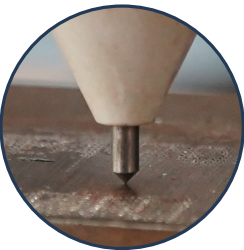
.022 in
.5588 mm



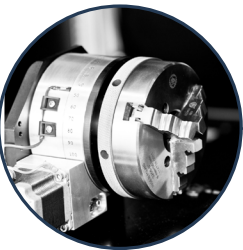
The proprietary Multi-Strike feature fires the pin multiple times, resulting in a deeper mark. The software upgrade can be added to many markers. The TMM7200 is a custom product, for extra deep marking needs.



Bar Code Scanner



AutoSense



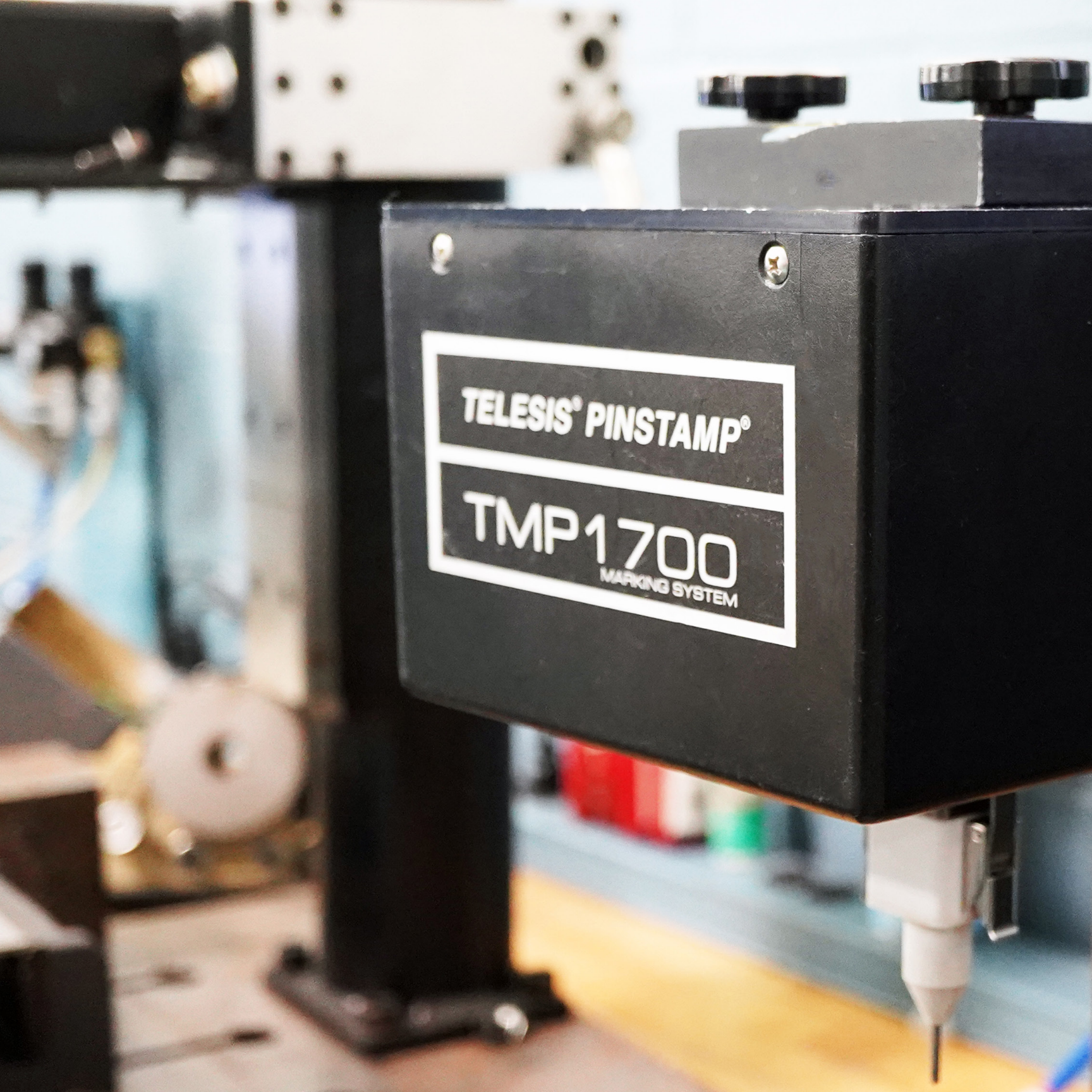
Rotary Chuck



Programmable Z-Axis



iZONIT™



The Proven Industrial Workhorse

TMP1700

- Rugged, low-maintenance** X/Y platform
- Compact**, contaminant-resistant head design
- Marks a wide range of materials** from soft plastics to hardened steel (rc60)
- Interchangeable marking pin** sizes for depths from 0.001 in - 0.018 in (0.03 mm - 0.45 mm)
- Floating pin technology **accommodates surface irregularities** up to 0.25 in (6 mm) easily

Additional Features

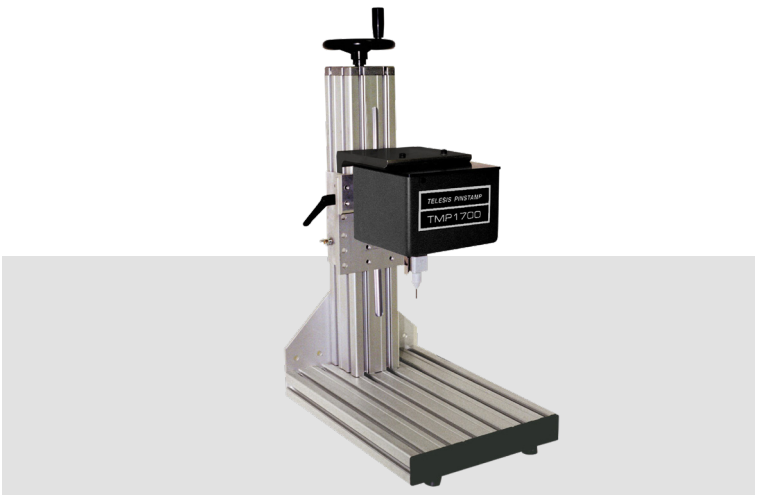
- Dot Density: Up to 200 dots-per-inch (79 dots per centimeter)
- Marking speeds up to six characters per second
- Automatically generates serial numbers, time, date, and shift codes
- Store up to 400 marking patterns
- Easily interfaced to PLCs and host computers

Controllers

- Fixed Button** (TMC470)
- Touch Screen** (TMC520)

Software

- Proprietary **Merlin® III**



Options and Accessories

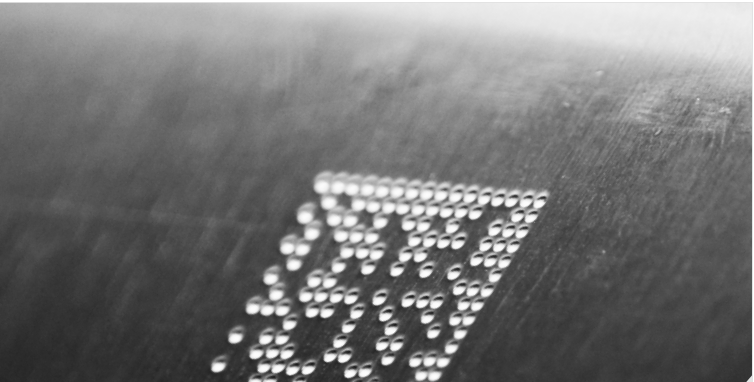
- Rotary fixtures for marking circumferences of cylindrical parts
- Marking head mounting post, including programmable Z-axis
- Panel-mount and IP/NEMA rated controllers
- Easy and free software upgrades

Marking Window



Marking Specifications

Max Character Depth	0.003 in 0.76 mm
Max Character Height	1.5 in 38.1 mm
Characters per Second	6
Resolution	200 dpi





A Large Marking Window

TMP3200 (TMP3200EAS)

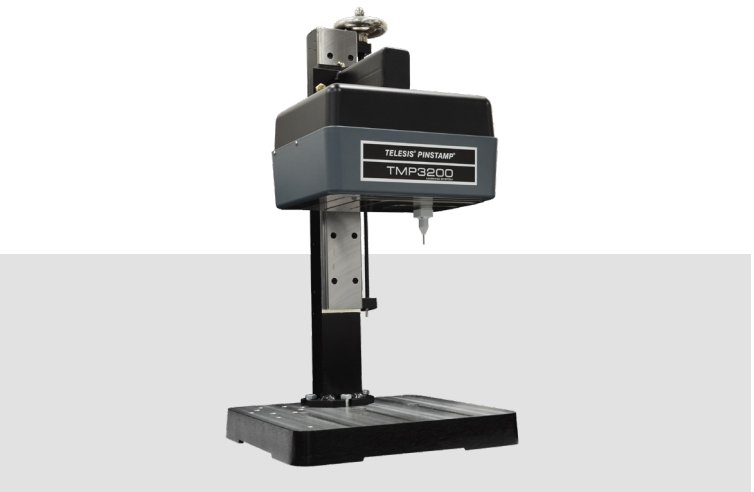
Simple yet robust belt-driven dual rail

X/Y platform yields **high-quality characters**

Rugged design means **long-lasting, low-maintenance operation**

Marks a wide range of materials from soft plastics to hardened steel (rc60)

Floating pin technology easily **accommodates surface irregularities** up to 0.25 in (6 mm)



Additional Features

Dot Density: Up to 200 dots-per-inch (79 dots per centimeter)

Choice of interchangeable marking pins: .001 in - .018 in (0.03 mm - 0.34 mm)

Marking speeds up to six characters per second

Automatically generates serial numbers, time, date, and shift codes

Easily interfaced to PLCs and host computers

Controllers

Fixed Button (TMC470)

Touch Screen (TMC520)

Software

Proprietary **Merlin® III**

Options and Accessories

Rotary fixtures for marking circumferences of cylindrical parts

Marking head mounting post, including programmable Z-axis

Panel-mount and IP/NEMA rated controllers

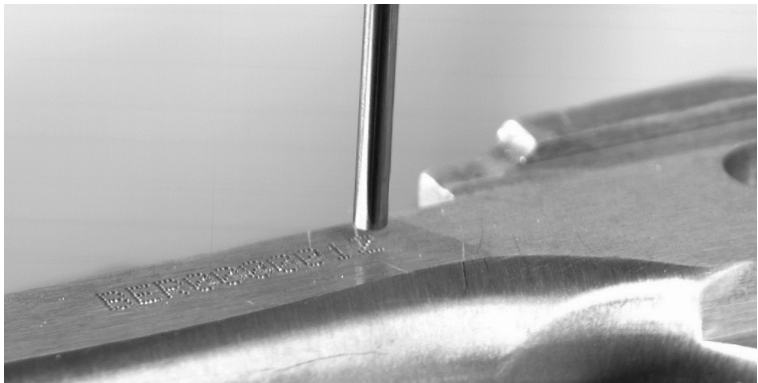
Easy and free software upgrades

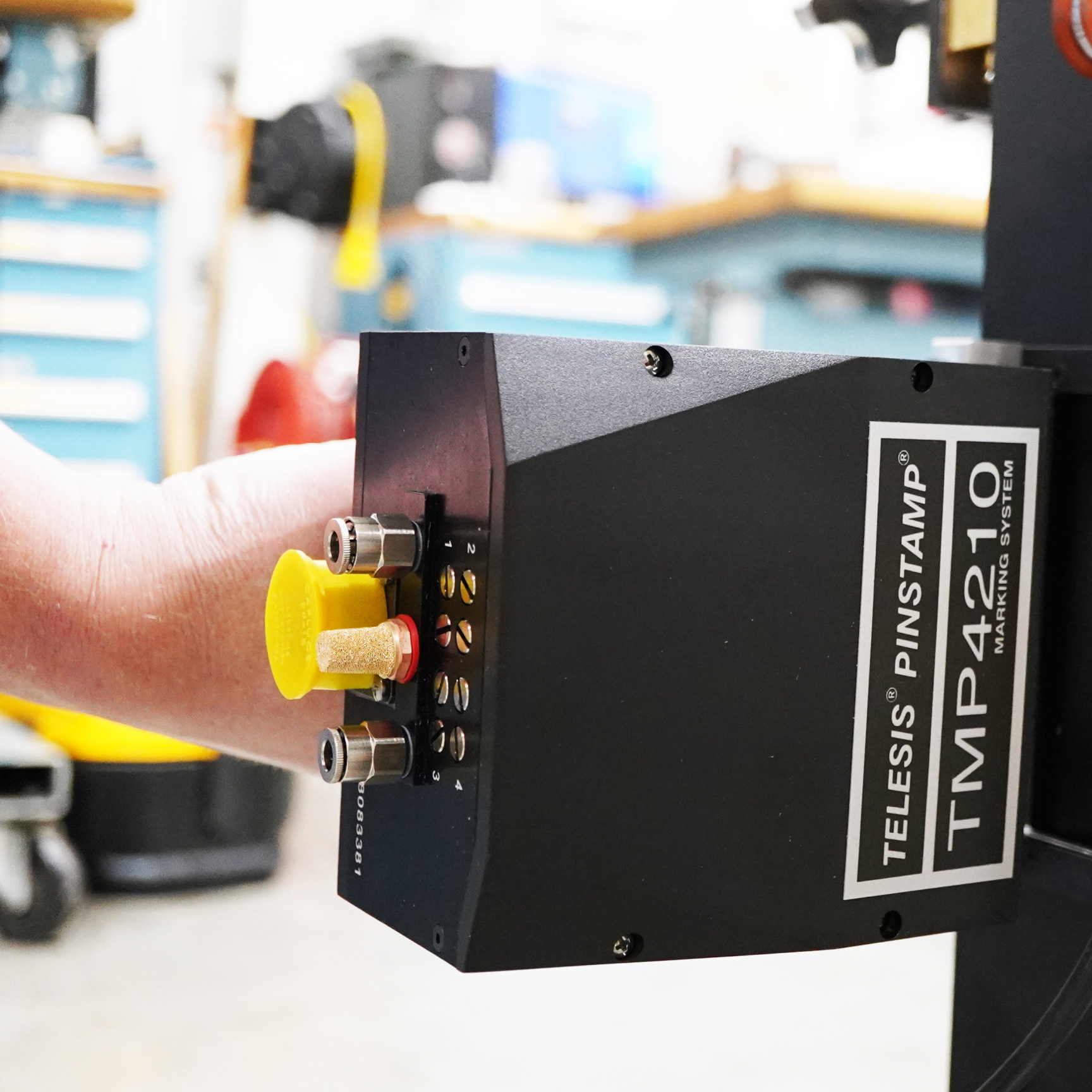
Marking Window



Marking Specifications

Max Character Depth	0.013 in 0.33 mm
Max Character Height	4.0 in 101.6 mm
Characters per Second	6
Resolution	200 dpi





Lightweight and Compact Hand-Held

TMP4210

Great for smaller environments where movement and space is restricted

Lightweight construction is **easy to hold** for long periods of time

Durable components **withstand tough manufacturing environments**

Satisfies a wide range of marking applications while **integrating into factory automation networks**

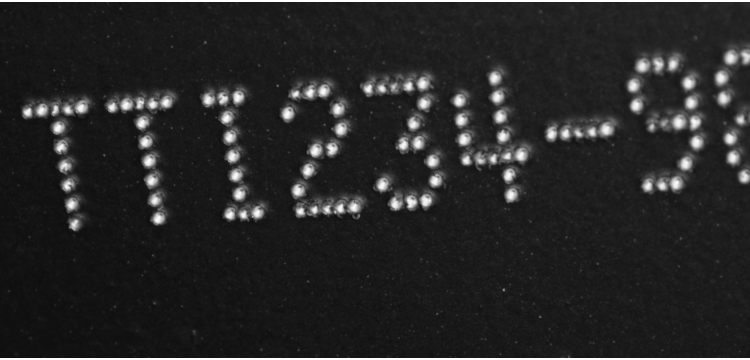


- Additional Features**
- Dot Density: Up to 200 dots-per-inch (79 dots per centimeter)
 - Choice of interchangeable marking pins: .001 in - .018 in (0.03 mm - 0.34 mm)
 - Marking speeds up to six characters per second
 - Automatically generates serial numbers, time, date, and shift codes
 - Easily interfaced to PLCs and host computers

- | Controllers | Software |
|-----------------------|--------------------------------|
| Fixed Button (TMC470) | Proprietary Merlin® III |
| Touch Screen (TMC520) | |

- Options and Accessories**
- Panel-mount and IP/NEMA-rated controllers
 - Easy and free software upgrades

Marking Window		Marking Specifications	
	0.5 in	Max Character Depth	0.013 in
	12.7 mm		0.33 mm
		Max Character Height	0.5 in
			12.7 mm
		Characters per Second	8
		Resolution	200 dpi





" The 6100 is top quality. Our markers run all day long and they are 'bulletproof.' "

- Bud Nelson, Acutec Precision

Robotic Design for Precise Marks

TMP6100

Great for cylindrical marking where a rotary device can add efficiency and practicality

The most versital PINSTAMP marker

Durable components **withstand tough manufacturing environments**

Satisfies a wide range of marking applications while **integrating into factory automation networks**



Additional Features

- Dot Density: Up to 200 dots-per-inch (79 dots per centimeter)
- Choice of interchangeable marking pins: .001 in - .018 in (0.03 mm - 0.34 mm)
- Marking speeds up to six characters per second
- Automatically generates serial numbers, time, date, and shift codes
- Easily interfaced to PLCs and host computers

Controllers

Fixed Button (TMC470)

Software

Proprietary **Merlin® III**

Options and Accessories

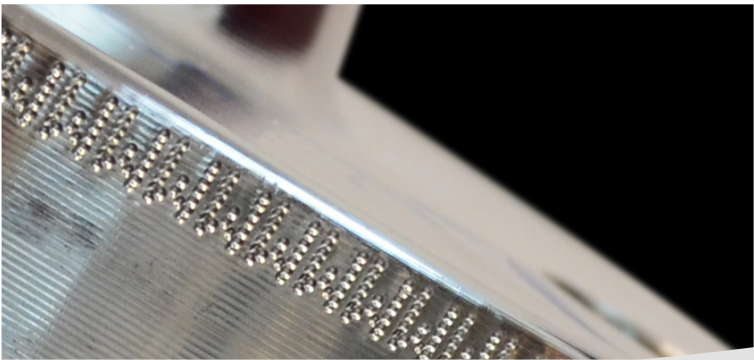
- Rotary fixtures for marking circumferences of cylindrical parts
- Marking head mounting post, including programmable Z-axis
- Panel-mount and IP/NEMA rated controllers
- Easy and free software upgrades

Marking Window



Marking Specifications

Max Character Depth	Varies
Max Character Height	6 in 152.4 mm
Characters per Second	Varies
Resolution	200 dpi



PINSTAMP® Controllers



TMC470 Fixed-Button Controller

- Fully contained controller—no PC required
- Easy to use menu design for pattern design
- Ethernet port for TCP/IP communications
- EthernetIP and PROFINET capable
- Durable membrane keyboard
- Store up to 400 marking patterns locally
- Panel-mount kits available



TMC520 Touch-Screen Controller

- Create a design and produce a mark in under a minute
- See exactly how the design will look before printing
- Easy-to-use tools for arc text, graphics, and data matrix
- Contaminant-resistant design and flexible installation
- Software can be customized for unique applications
- Impact-proof touch screen interface
- Panel-mount kits available

TMC520 FEATURES



PINCH ZOOM



PARSE FLAGS



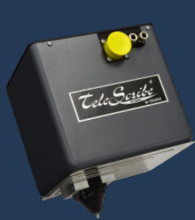
ARC TEXT



EASY SWIPE MENUS

Telescribe®

SC2000



The SC2000 is a great **low-noise compact marker** for continuous marking of human-readable characters and symbols

SC2000 Marking Window
2.95 in x 1.57 in
(75 mm x 40 mm)

Marking Speed
.125 in (3 mm) character
up to 2 characters/second

SS3700

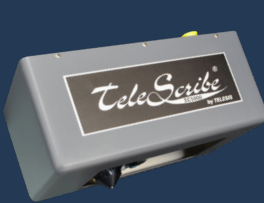


The SS3700 is expertly designed with a **large marking window and creates deep, quick marks with a servo-driven motor**

SS3700 Marking Window
2 in x 6 in
(50.8 mm x 152.4 mm)

Marking Speed
.276 in (7 mm) character
up to 2 characters/second

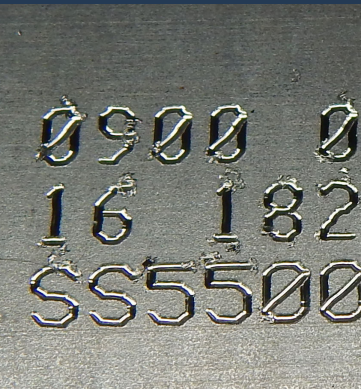
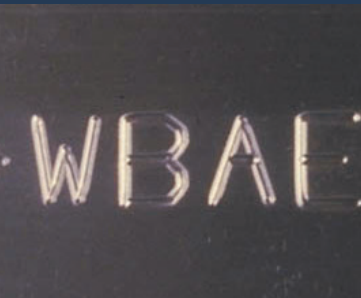
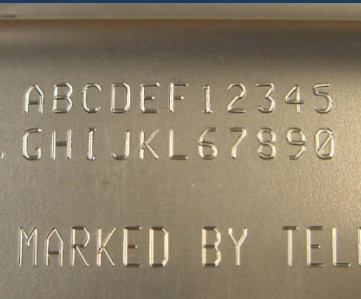
SC5000



The most powerful scribe marker, the **heavy duty SC5000 has a large marking window and can create extra deep and wide marks**

SC5000 Marking Window
2.5 in x 7.5 in
(63 mm x 190 mm)

Marking Speed
.125 in (3 mm) character
up to 1.7 characters/second



TELESCRIBE® BENEFITS

A **wide variety** of marking pins are available

Easily integrates into a wide range of automated online and manual applications

Virtually silent marking

Pin **penetrates without puncture**

Produces **crisp** logos in addition to text

PINSTAMP® Marking Windows to Scale

TMP6100
6.0 in x 12.0 in
152.4 mm x 304.8 mm

TMP3200
4.0 in x 6.0 in
101.6 mm x 152.4 mm

Benchmark 320
4.0 in x 6.0 in
101.6 mm x 152.4 mm

TMP4750
1.57 in x 5.5 in
40 mm x 140 mm

TMM4500E
1.0 in x 4.0 in
25.4 mm x 101.6 mm

Nomad 2000
1.0 in x 4.0 in
25.4 mm x 101.6 mm

Nomad 4000
1.0 in x 4.0 in
25.4 mm x 101.6 mm

Benchmark 460
1.0 in x 4.0 in
25.4 mm x 101.6 mm

TMP1700
1.50 in x 2.50 in
38.1 mm x 63.5 mm

TMP2100
0.79 in x 1.96 in
20 mm x 50 mm

TMP4210
0.5 in x 2.0 in
12.7 mm x 50.8 mm

TMM4200
0.5 in x 2.0 in
12.7 mm x 50.8 mm

TMM4250
0.5 in x 2.0 in
12.5 mm x 60.8 mm

Floating Pin

All PINSTAMP® pneumatic dot peen markers contain our **revolutionary floating pin technology, developed by Telesis an patented in 1985**. This technology enables PINSTAMP marking systems to accommodate surface irregularities up to .25in (6mm) and mark clearly and reliably on my types of materials.

- // Give the user the ability to make adjustments to marks
- // No springs to replace
- // Constant positive air low keeps in chamber clean
- // Achieves higher speeds

